

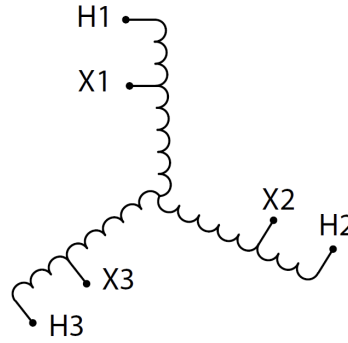
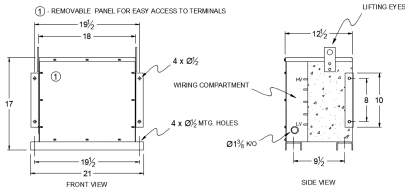
RC15H-C/EP

\$2,422.00 CAD

SKU: fc81d25013aa

Categories: [Encapsulated Autotransformer](#)

SCHEMATIC/DIAGRAM AND DIMENSION PICTURES



PRODUCT SPECIFICATIONS

| | |
|------------------------|---------------------------|
| Weight | 400 lbs |
| Phases | 3 |
| kVA | 15 |
| Connection | 3PhA-NT-1 |
| Primary Voltage | 480 |



| | |
|---------------------------------------|--|
| Primary Max Current | 18A |
| Primary Markings | H1-H2-H3 |
| Primary Terminals | #2-14 AWG |
| Secondary Voltage | 240 |
| Secondary Max Current | 36.1A |
| Secondary Markings | X1-X2-X3 |
| Secondary Terminals | #2-14 AWG |
| Primary Taps | N/A |
| Conductor Material | Copper |
| Insulation Class | 200°C |
| BIL (Insulation) Level | 10kV |
| Impedance | 0.5 – 1.5% |
| Sound (db) | 45 |
| Enclosure Type | NEMA 3R Indoor |
| Enclosure | E3R-3PEP-3 |
| Finish | Polyster Powder Coat – ANSI/ASA 61 Grey |
| Standards & Certifications | CSA Certified File No. LR34493, UL Listed File No. E108255, ISO 9001:2015 Registered |