



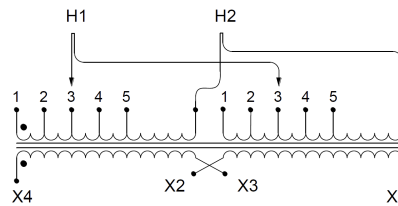
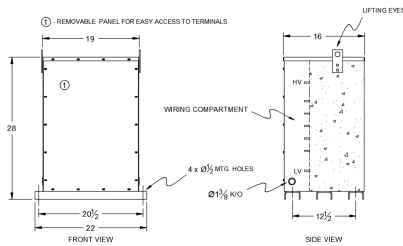
SA50H1-K/EP

\$4,563.90 USD

SKU: b2d968f74647

Categories: [Encapsulated Isolation Transformer](#)

SCHEMATIC/DIAGRAM AND DIMENSION PICTURES



PRODUCT SPECIFICATIONS

| | |
|---------------|--------------------|
| Weight | 750 lbs |
| Phases | 1 |
| kVA | 50 |



| | |
|---------------------------------------|------------------------------------------------------------------------------------------------------|
| Connection | 1Ph-2coil-5t-SD |
| Primary Voltage | 460 |
| Primary Max Current | 108.7A |
| Primary Markings | H1-H2 |
| Primary Terminals | #2/0-6 AWG |
| Secondary Voltage | 120/240 |
| Secondary Max Current | 416.7A |
| Secondary Markings | X1-X3-X2-X4 |
| Secondary Terminals | Pads |
| Primary Taps | +/- 2 x 2.5% |
| Conductor Material | Aluminum |
| Temperatue Rise | 130°C |
| Insuation Class | 200°C |
| BIL (Insulation) Level | 10kV |
| Efficiency | N/A |
| Impedance | 1.5 – 3.5% |
| Sound (db) | 45 |
| Enclosure Type | NEMA 3R Indoor |
| Enclosure | E3R-1PEP-7 |
| Finish | Polyster Powder Coat – ANSI/ASA 61 Grey |
| Standards & Certifications | CSA Certified File No. LR34493, UL Listed File No. E108255, ISO 9001:2015 Registered |