



**25KVA 208 VOLTS TO 600 VOLTS  
SINGLE PHASE AUTOTRANSFORMER**



# 25KVA 208 VOLTS TO 600 VOLTS SINGLE PHASE AUTOTRANSFORMER

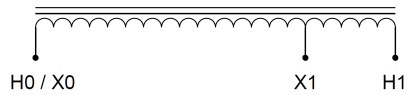
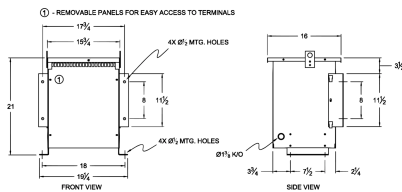
**\$2,840.30 CAD**

Single Phase Autotransformer with a capacity of 25kVA, transforming 208 Volts to 600 Volts

**SKU:** MC25B-J

**Categories:** Autotransformer

## SCHEMATIC/DIAGRAM AND DIMENSION PICTURES



Single Phase Autotransformer with a capacity of 25kVA, transforming 208 Volts to 600 Volts



## PRODUCT SPECIFICATIONS

Weight	166.7 lbs
Phases	<a href="#">1</a>
kVA	<a href="#">25</a>
Connection	<a href="#">1PhA-NT-1</a>
Primary Voltage	<a href="#">208</a>
Primary Max Current	<a href="#">69.4A</a>
Primary Markings	<a href="#">X0-X1</a>
Primary Terminals	<a href="#">#2-14 AWG</a>
Secondary Voltage	<a href="#">600</a>
Secondary Max Current	<a href="#">24.1A</a>
Secondary Markings	<a href="#">H0-H1</a>
Secondary Terminals	<a href="#">Terminal Blocks</a>
Primary Taps	<a href="#">N/A</a>
Conductor Material	<a href="#">Copper</a>
Insulation Class	<a href="#">220°C (Class H)</a>
BIL (Insulation) Level	<a href="#">10kV</a>
Efficiency (@35% Load) %	<a href="#">N/A</a>
Impedance Range	<a href="#">2.5 – 4.5%</a>
Sound (db)	<a href="#">45 dB</a>
Enclosure Type	<a href="#">NEMA 3R Indoor</a>
Enclosure Size	<a href="#">E3R-4</a>
Finish/Colour	<a href="#">Polyester Powder Coat – ANSI/ASA 61 Grey</a>
Standards & Certifications	<a href="#">CSA Certified File No. LR34493, UL Listed File No. E108255, ISO 9001:2015 Registered</a>



OFFICIAL QUOTE

25KVA 208 VOLTS TO 600 VOLTS  
SINGLE PHASE AUTOTRANSFORMER



Country/Manufacturer	<a href="#">Canada/RPM</a>
----------------------	----------------------------