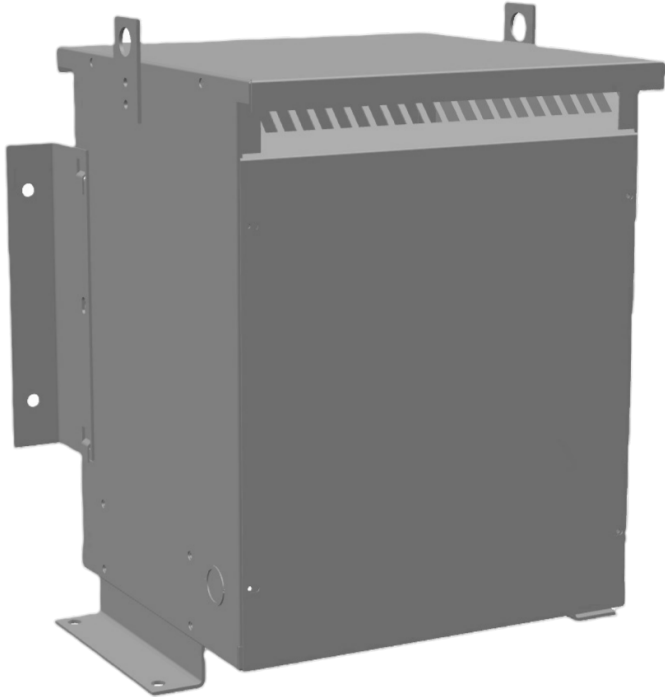




**100KVA 415 VOLTS TO 460 VOLTS
SINGLE PHASE AUTOTRANSFORMER**



**100KVA 415 VOLTS TO 460
VOLTS SINGLE PHASE
AUTOTRANSFORMER**

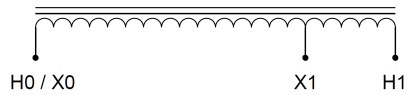
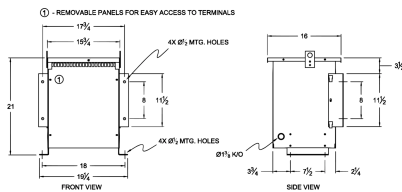
\$1,473.58 USD

Single Phase Autotransformer with a capacity of 100kVA, transforming 415 Volts to 460 Volts

SKU: MC100G2-H1

Categories: [Autotransformer](#)

SCHEMATIC/DIAGRAM AND DIMENSION PICTURES



Single Phase Autotransformer with a capacity of 100kVA, transforming 415 Volts to 460 Volts



PRODUCT SPECIFICATIONS

Weight	131.2 lbs
Phases	1
kVA	100
Connection	1PhA-NT-1
Primary Voltage	415
Primary Max Current	139.1A
Primary Markings	X0-X1
Primary Terminals	300MCM-6
Secondary Voltage	460
Secondary Max Current	125.5A
Secondary Markings	H0-H1
Secondary Terminals	300MCM-6
Primary Taps	N/A
Conductor Material	Copper
Insulation Class	220°C (Class H)
BIL (Insulation) Level	10kV
Efficiency (@35% Load) %	N/A
Impedance Range	0.5 – 1.5%
Sound (db)	45 dB
Enclosure Type	NEMA 3R Indoor
Enclosure Size	E3R-4
Finish/Colour	Polyester Powder Coat – ANSI/ASA 61 Grey
Standards & Certifications	CSA Certified File No. LR34493, UL Listed File No. E108255, ISO 9001:2015 Registered



OFFICIAL QUOTE

100KVA 415 VOLTS TO 460 VOLTS
SINGLE PHASE AUTOTRANSFORMER



Country/Manufacturer	Canada/RPM
----------------------	----------------------------