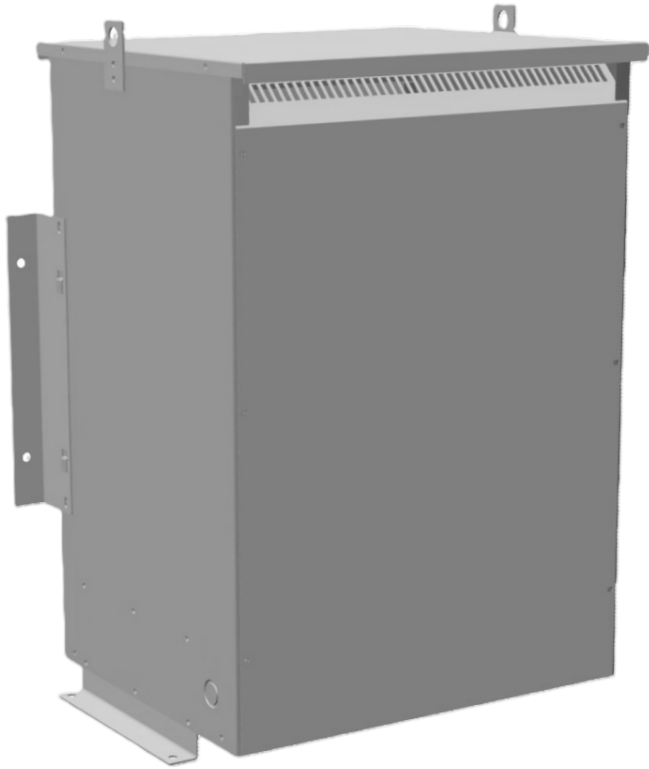




**150KVA 416 VOLTS TO 208 VOLTS  
SINGLE PHASE AUTOTRANSFORMER**



**150KVA 416 VOLTS TO 208  
VOLTS SINGLE PHASE  
AUTOTRANSFORMER**

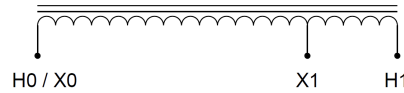
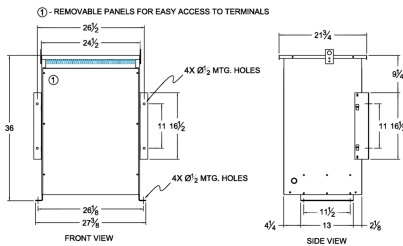
**\$8,602.00 CAD**

Single Phase Autotransformer with a capacity of 150kVA, transforming 416 Volts to 208 Volts

**SKU:** MC150G-B

**Categories:** [Autotransformer](#)

**SCHEMATIC/DIAGRAM AND DIMENSION PICTURES**



Single Phase Autotransformer with a capacity of 150kVA, transforming 416 Volts to 208 Volts



PRODUCT SPECIFICATIONS

<b>Weight</b>	603.8 lbs
<b>Phases</b>	<a href="#">1</a>
<b>kVA</b>	<a href="#">150</a>
<b>Connection</b>	<a href="#">1PhA-NT-1</a>
<b>Primary Voltage</b>	<a href="#">416</a>
<b>Primary Max Current</b>	<a href="#">208.2A</a>
<b>Primary Markings</b>	<a href="#">H0-H1</a>
<b>Primary Terminals</b>	<a href="#">600MCM-2</a>
<b>Secondary Voltage</b>	<a href="#">208</a>
<b>Secondary Max Current</b>	<a href="#">416.4A</a>
<b>Secondary Markings</b>	<a href="#">X0-X1</a>
<b>Secondary Terminals</b>	<a href="#">Pads</a>
<b>Primary Taps</b>	<a href="#">N/A</a>
<b>Conductor Material</b>	<a href="#">Copper</a>
<b>Insulation Class</b>	<a href="#">220°C (Class H)</a>
<b>BIL (Insulation) Level</b>	<a href="#">10kV</a>
<b>Efficiency (@35% Load) %</b>	<a href="#">N/A</a>
<b>Impedance Range</b>	<a href="#">1.5 – 3.5%</a>
<b>Sound (db)</b>	<a href="#">55 dB</a>
<b>Enclosure Type</b>	<a href="#">NEMA 3R Indoor</a>
<b>Enclosure Size</b>	<a href="#">E3R-7</a>
<b>Finish/Colour</b>	<a href="#">Polyester Powder Coat – ANSI/ASA 61 Grey</a>
<b>Standards &amp; Certifications</b>	<a href="#">CSA Certified File No. LR34493, UL Listed File No. E108255, ISO 9001:2015 Registered</a>



OFFICIAL QUOTE

150KVA 416 VOLTS TO 208 VOLTS  
SINGLE PHASE AUTOTRANSFORMER



Country/Manufacturer

[Canada/RPM](#)