



## 3VA 600 VOLTS TO 480Y/277 VOLTS THREE PHASE ISOLATION TRANSFORMER

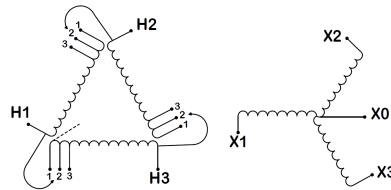
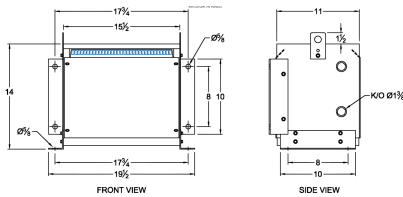
**\$1,330.00 CAD**

Three Phase Isolation Transformer with a capacity of 3kVA, transforming 600 Volts to 480Y/277 Volts

SKU: BC3J-P

Categories: [Isolation Transformers](#)

### SCHEMATIC/DIAGRAM AND DIMENSION PICTURES



Three Phase Isolation Transformer with a capacity of 3kVA, transforming 600 Volts to 480Y/277 Volts



PRODUCT SPECIFICATIONS

|                            |  |
|----------------------------|--|
| Weight                     | 73 lbs   |
| Phases                     | <a href="#">3</a>  |
| kVA                        | <a href="#">3</a>  |
| Connection                 | <a href="#">3Ph-DY-3T-SD</a>   |
| Primary Voltage            | <a href="#">600</a>  |
| Primary Max Current        | <a href="#">2.89A</a>  |
| Primary Markings           | <a href="#">H1-H2-H3</a>   |
| Primary Terminals          | <a href="#">#2-14 AWG</a>  |
| Secondary Voltage          | <a href="#">480Y/277</a>   |
| Secondary Max Current      | <a href="#">3.61A</a>  |
| Secondary Markings         | <a href="#">X0-X1-X2-X3</a>  |
| Secondary Terminals        | <a href="#">#2-14 AWG</a>  |
| Primary Taps               | <a href="#">+/- 1 x 5%</a>   |
| Conductor Material         | <a href="#">Copper</a>   |
| BIL (Insulation) Level     | <a href="#">10kV</a>   |
| Efficiency (@35% Load) %   | <a href="#">N/A</a>  |
| Impedance Range            | <a href="#">5.0 – 7.0%</a>   |
| Sound (db)                 | <a href="#">40</a>   |
| Enclosure Type             | <a href="#">NEMA 1</a>   |
| Enclosure Size             | <a href="#">E1-3</a>   |
| Finish/Colour              | <a href="#">Polyester Powder Coat – ANSI/ASA 61 Grey</a>   |
| Standards & Certifications | <a href="#">CSA Certified File No. LR34493, UL Listed File No. E108255, ISO 9001:2015 Registered</a> |
| Temperatue Rise            | <a href="#">115°C</a>  |



OFFICIAL QUOTE

3VA 600 VOLTS TO 480Y/277 VOLTS  
THREE PHASE ISOLATION  
TRANSFORMER



|                      |  |
|----------------------|--|
| Insuation Class      | <a href="#">115°C</a>                                    |
| Country/Manufacturer | <a href="#">Canada/RPM</a>                               |
| Finish/Colour        | <a href="#">Polyester Powder Coat – ANSI/ASA 61 Grey</a> |