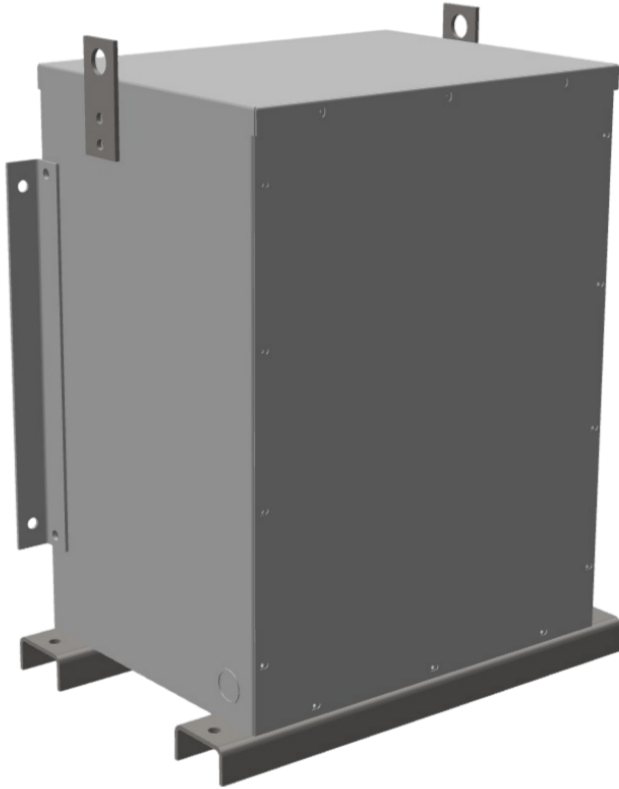




**25KVA 460 VOLTS TO 120/240 VOLTS  
SINGLE PHASE ENCAPSULATED  
ISOLATION TRANSFORMER**



**25KVA 460 VOLTS TO  
120/240 VOLTS SINGLE  
PHASE ENCAPSULATED  
ISOLATION TRANSFORMER**

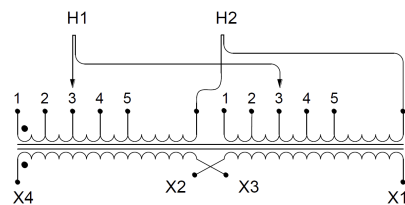
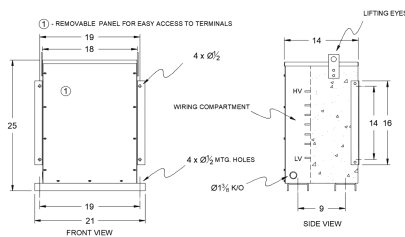
**\$2,268.84 USD**

Single Phase Encapsulated Isolation Transformer  
with a capacity of 25kVA, transforming 460 Volts  
to 120/240 Volts

**SKU:** SA25H1-K/EP

**Categories:** [Encapsulated Isolation Transformer](#)

## SCHEMATIC/DIAGRAM AND DIMENSION PICTURES



Single Phase Encapsulated Isolation Transformer with a capacity of 25kVA, transforming 460 Volts to 120/240 Volts

25KVA 460 VOLTS TO 120/240 VOLTS  
SINGLE PHASE ENCAPSULATED  
ISOLATION TRANSFORMER



## PRODUCT SPECIFICATIONS

|                            |  |
|----------------------------|--|
| Weight                     | 330 lbs  |
| Phases                     | <a href="#">1</a>  |
| kVA                        | <a href="#">25</a>   |
| Connection                 | <a href="#">1Ph-2coil-5t-SD</a>  |
| Primary Voltage            | <a href="#">460</a>  |
| Primary Max Current        | <a href="#">54.3A</a>  |
| Primary Markings           | <a href="#">H1-H2</a>  |
| Primary Terminals          | <a href="#">#2-14 AWG</a>  |
| Secondary Voltage          | <a href="#">120/240</a>  |
| Secondary Max Current      | <a href="#">208.3A</a>   |
| Secondary Markings         | <a href="#">X1-X3-X2-X4</a>  |
| Secondary Terminals        | <a href="#">#2/0-6 AWG</a>   |
| Primary Taps               | <a href="#">+/- 2 x 2.5%</a>   |
| Conductor Material         | <a href="#">Aluminum</a>   |
| BIL (Insulation) Level     | <a href="#">10kV</a>   |
| Efficiency (@35% Load) %   | <a href="#">N/A</a>  |
| Impedance Range            | <a href="#">1.5 – 3.5%</a>   |
| Sound (db)                 | <a href="#">45</a>   |
| Enclosure Type             | <a href="#">NEMA 3R Indoor</a>   |
| Enclosure Size             | <a href="#">E3R-1PEP-6</a>   |
| Finish/Colour              | <a href="#">Polyester Powder Coat – ANSI/ASA 61 Grey</a>   |
| Standards & Certifications | <a href="#">CSA Certified File No. LR34493, UL Listed File No. E108255, ISO 9001:2015 Registered</a> |
| Country/Manufacturer       | <a href="#">Canada/RPM</a>   |