



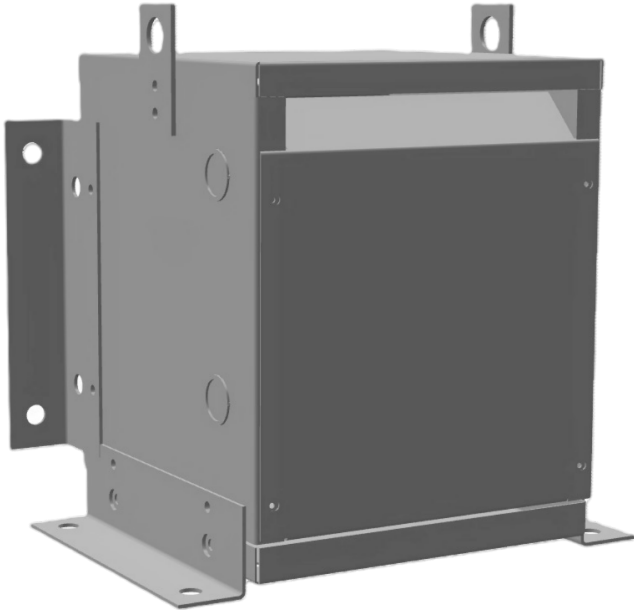
## 15KVA 240 VOLTS TO 415 VOLTS SINGLE PHASE AUTOTRANSFORMER

**\$1,208.11 USD**

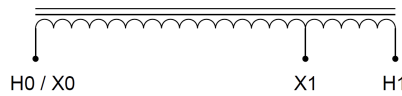
Single Phase Autotransformer with a capacity of  
15kVA, transforming 240 Volts to 415 Volts

SKU: MC15C-G2

Categories: [Autotransformer](#)



### SCHEMATIC/DIAGRAM AND DIMENSION PICTURES



Single Phase Autotransformer with a capacity of 15kVA, transforming 240 Volts to 415 Volts



## PRODUCT SPECIFICATIONS

Weight	93.8 lbs
Phases	<a href="#">1</a>
kVA	<a href="#">15</a>
Connection	<a href="#">1PhA-NT-1</a>
Primary Voltage	<a href="#">240</a>
Primary Max Current	<a href="#">36.1A</a>
Primary Markings	<a href="#">X0-X1</a>
Primary Terminals	<a href="#">#2-14 AWG</a>
Secondary Voltage	<a href="#">415</a>
Secondary Max Current	<a href="#">20.9A</a>
Secondary Markings	<a href="#">H0-H1</a>
Secondary Terminals	<a href="#">Terminal Blocks</a>
Primary Taps	<a href="#">N/A</a>
Conductor Material	<a href="#">Copper</a>
Insulation Class	<a href="#">220°C (Class H)</a>
BIL (Insulation) Level	<a href="#">10kV</a>
Efficiency (@35% Load) %	<a href="#">N/A</a>
Impedance Range	<a href="#">1.5 – 3.5%</a>
Sound (db)	<a href="#">40 dB</a>
Enclosure Type	<a href="#">NEMA 1</a>
Enclosure Size	<a href="#">E1-2</a>
Finish/Colour	<a href="#">Polyester Powder Coat – ANSI/ASA 61 Grey</a>
Standards & Certifications	<a href="#">CSA Certified File No. LR34493, UL Listed File No. E108255, ISO 9001:2015 Registered</a>



OFFICIAL QUOTE  
15KVA 240 VOLTS TO 415 VOLTS  
SINGLE PHASE AUTOTRANSFORMER



Country/Manufacturer	<a href="#">Canada/RPM</a>
----------------------	----------------------------