



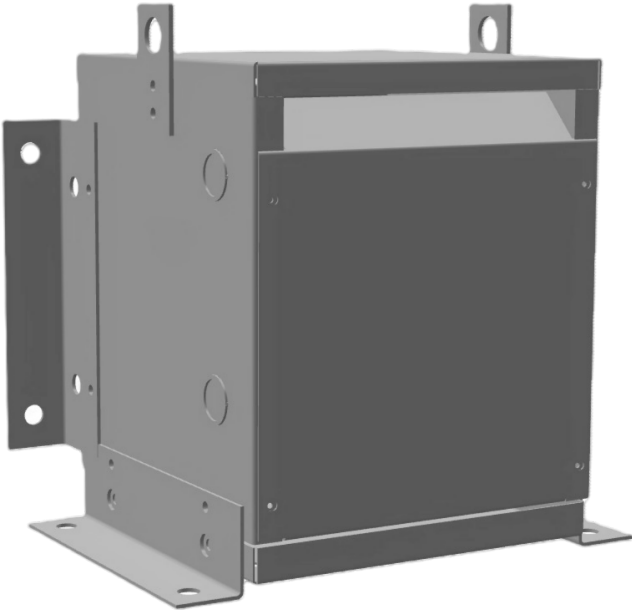
15KVA 550 VOLTS TO 415 VOLTS SINGLE PHASE AUTOTRANSFORMER

\$912.06 USD

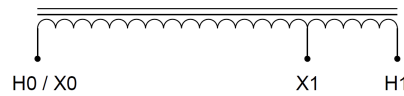
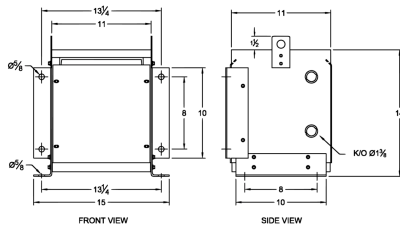
Single Phase Autotransformer with a capacity of 15kVA, transforming 550 Volts to 415 Volts

SKU: MC15J2-G2

Categories: [Autotransformer](#)



SCHEMATIC/DIAGRAM AND DIMENSION PICTURES



Single Phase Autotransformer with a capacity of 15kVA, transforming 550 Volts to 415 Volts



PRODUCT SPECIFICATIONS

Weight	75 lbs
Phases	1
kVA	15
Connection	1PhA-NT-1
Primary Voltage	550
Primary Max Current	15.7A
Primary Markings	H0-H1
Primary Terminals	Terminal Blocks
Secondary Voltage	415
Secondary Max Current	20.9A
Secondary Markings	X0-X1
Secondary Terminals	Terminal Blocks
Primary Taps	N/A
Conductor Material	Copper
Insulation Class	220°C (Class H)
BIL (Insulation) Level	10kV
Efficiency (@35% Load) %	N/A
Impedance Range	1.0 – 3.0%
Sound (db)	40 dB
Enclosure Type	NEMA 1
Enclosure Size	E1-2
Finish/Colour	Polyester Powder Coat – ANSI/ASA 61 Grey
Standards & Certifications	CSA Certified File No. LR34493, UL Listed File No. E108255, ISO 9001:2015 Registered



OFFICIAL QUOTE
15KVA 550 VOLTS TO 415 VOLTS
SINGLE PHASE AUTOTRANSFORMER



Country/Manufacturer	Canada/RPM
----------------------	----------------------------