



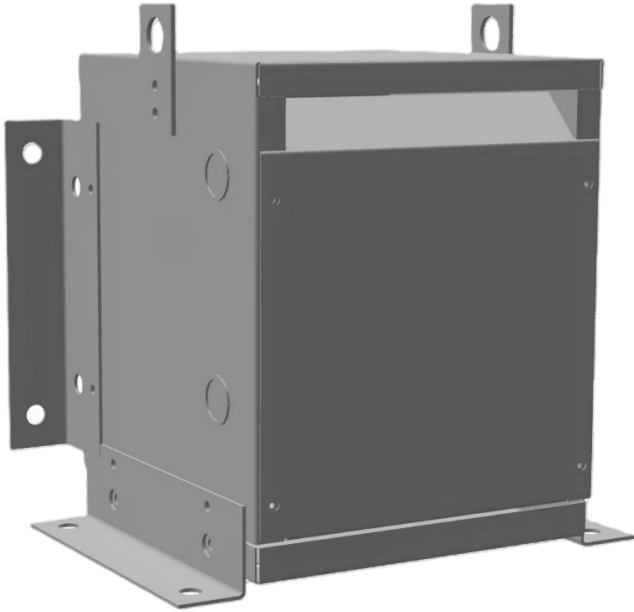
15KVA 240 VOLTS TO 416 VOLTS SINGLE PHASE AUTOTRANSFORMER

\$1,199.68 USD

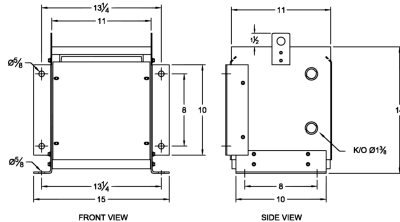
Single Phase Autotransformer with a capacity of
15kVA, transforming 240 Volts to 416 Volts

SKU: MC15C-G

Categories: [Autotransformer](#)



SCHEMATIC/DIAGRAM AND DIMENSION PICTURES



Single Phase Autotransformer with a capacity of 15kVA, transforming 240 Volts to 416 Volts



PRODUCT SPECIFICATIONS

Weight	94 lbs
Phases	1
kVA	15
Connection	1PhA-NT-1
Primary Voltage	240
Primary Max Current	36.1A
Primary Markings	X0-X1
Primary Terminals	#2-14 AWG
Secondary Voltage	416
Secondary Max Current	20.8A
Secondary Markings	H0-H1
Secondary Terminals	Terminal Blocks
Primary Taps	N/A
Conductor Material	Copper
Insulation Class	220°C (Class H)
BIL (Insulation) Level	10kV
Efficiency (@35% Load) %	N/A
Impedance Range	1.5 – 3.5%
Sound (db)	40 dB
Enclosure Type	NEMA 1
Enclosure Size	E1-2
Finish/Colour	Polyester Powder Coat – ANSI/ASA 61 Grey
Standards & Certifications	CSA Certified File No. LR34493, UL Listed File No. E108255, ISO 9001:2015 Registered



OFFICIAL QUOTE

15KVA 240 VOLTS TO 416 VOLTS

SINGLE PHASE AUTOTRANSFORMER



Country/Manufacturer	Canada/RPM
----------------------	----------------------------