

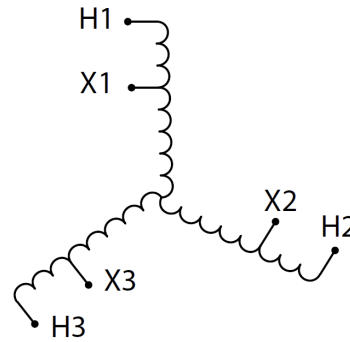
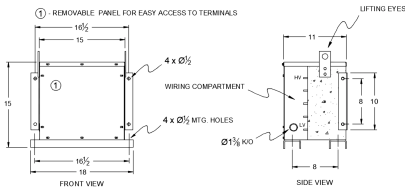
RC15J-H/EP

\$1,211.49 USD

SKU: 939ca7d9a154

Categories: [Encapsulated Autotransformer](#)

SCHEMATIC/DIAGRAM AND DIMENSION PICTURES



PRODUCT SPECIFICATIONS

Weight	190 lbs
Phases	3
kVA	15
Connection	3PhA-NT-1



Primary Voltage	600
Primary Max Current	14.4A
Primary Markings	H1-H2-H3
Primary Terminals	#2-14 AWG
Secondary Voltage	480
Secondary Max Current	18A
Secondary Markings	X1-X2-X3
Secondary Terminals	#2-14 AWG
Primary Taps	N/A
Conductor Material	Copper
Insuation Class	200°C
BIL (Insulation) Level	10kV
Impedance	0.5 – 1.5%
Sound (db)	40
Enclosure Type	NEMA 3R Indoor
Enclosure	E3R-3PEP-2
Finish	Polyster Powder Coat – ANSI/ASA 61 Grey
Standards & Certifications	CSA Certified File No. LR34493, UL Listed File No. E108255, ISO 9001:2015 Registered