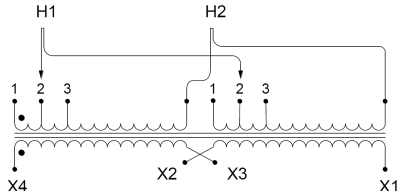
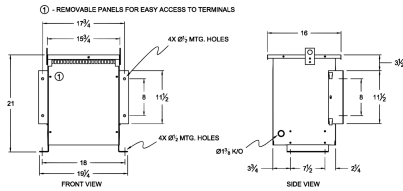


SC10B-J

\$1,268.20 USD

SKU: 05a3327f5563
 Categories: [Isolation Transformers](#)

SCHEMATIC/DIAGRAM AND DIMENSION PICTURES



PRODUCT SPECIFICATIONS

| | |
|---------------------|---------------------------------|
| Weight | 140 lbs |
| Phases | 1 |
| kVA | 10 |
| Connection | 1Ph-2coil-3t-SD |
| Primary Voltage | 208 |
| Primary Max Current | 48.1A |
| Primary Markings | X1-X2 |



| | |
|----------------------------|--|
| Primary Terminals | #2-14 AWG |
| Secondary Voltage | 600 |
| Secondary Max Current | 16.7A |
| Secondary Markings | H1-H2 |
| Secondary Terminals | #2-14 AWG |
| Primary Taps | +/- 2 x 2.5% |
| Conductor Material | Copper |
| Insulation Class | 220°C |
| BIL (Insulation) Level | 10kV |
| Impedance | 5.0 – 6.5% |
| Sound (db) | 45 |
| Enclosure Type | NEMA 3R Indoor |
| Enclosure | E3R-4 |
| Finish | Polyster Powder Coat – ANSI/ASA 61 Grey |
| Standards & Certifications | CSA Certified File No. LR34493, UL Listed File No. E108255, ISO 9001:2015 Registered |
| Efficiency | N/A |