

## 100KVA 600 VOLTS TO 120/240 VOLTS SINGLE PHASE ENCAPSULATED ISOLATION TRANSFORMER

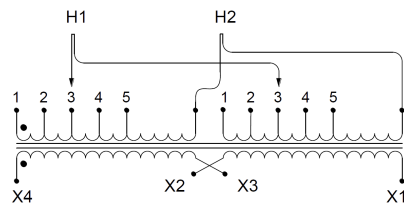
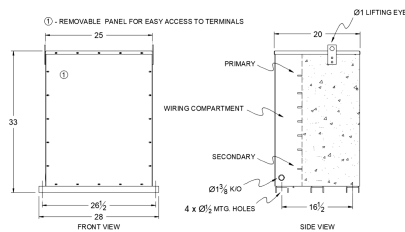
**\$7,619.74 USD**

Single Phase Encapsulated Isolation Transformer  
with a capacity of 100kVA, transforming 600 Volts  
to 120/240 Volts

**SKU:** SC100J-K/EP

**Categories:** [Encapsulated Isolation Transformer](#)

### SCHEMATIC/DIAGRAM AND DIMENSION PICTURES



Single Phase Encapsulated Isolation Transformer with a capacity of 100kVA, transforming 600 Volts to 120/240 Volts

100KVA 600 VOLTS TO 120/240  
VOLTS SINGLE PHASE  
ENCAPSULATED ISOLATION  
TRANSFORMER



PRODUCT SPECIFICATIONS

Weight	1460 lbs
Phases	<a href="#">1</a>
kVA	<a href="#">100</a>
Connection	<a href="#">1Ph-2coil-5t-SD</a>
Primary Voltage	<a href="#">600</a>
Primary Max Current	<a href="#">166.7A</a>
Primary Markings	<a href="#">H1-H2</a>
Primary Terminals	<a href="#">300MCM-6</a>
Secondary Voltage	<a href="#">120/240</a>
Secondary Max Current	<a href="#">833.3A</a>
Secondary Markings	<a href="#">X1-X3-X2-X4</a>
Secondary Terminals	<a href="#">Pads</a>
Primary Taps	<a href="#">+/- 2 x 2.5%</a>
Conductor Material	<a href="#">Copper</a>
BIL (Insulation) Level	<a href="#">10kV</a>
Efficiency (@35% Load) %	<a href="#">N/A</a>
Impedance Range	<a href="#">1.5 – 3.5%</a>
Sound (db)	<a href="#">50</a>
Enclosure Type	<a href="#">NEMA 3R Indoor</a>
Enclosure Size	<a href="#">E3R-1PEP-8</a>
Finish/Colour	<a href="#">Polyester Powder Coat – ANSI/ASA 61 Grey</a>
Standards & Certifications	<a href="#">CSA Certified File No. LR34493, UL Listed File No. E108255, ISO 9001:2015 Registered</a>
Country/Manufacturer	<a href="#">Canada/RPM</a>