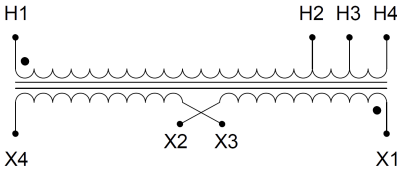
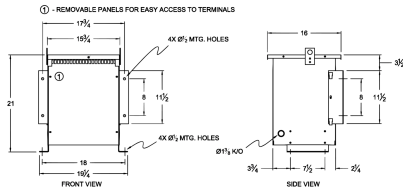


# SC7J-K

## \$1,119.43 USD

SKU: 64459d694c7d  
Categories: [Isolation Transformers](#)

### SCHEMATIC/DIAGRAM AND DIMENSION PICTURES



### PRODUCT SPECIFICATIONS

|                     |                                 |
|---------------------|---------------------------------|
| Weight              | 120 lbs                         |
| Phases              | <a href="#">1</a>               |
| kVA                 | <a href="#">7.5</a>             |
| Connection          | <a href="#">1Ph-1coil-3T-SD</a> |
| Primary Voltage     | <a href="#">600</a>             |
| Primary Max Current | <a href="#">12.5A</a>           |
| Primary Markings    | <a href="#">H1-H2-H3-H4</a>     |



|                            |  |
|----------------------------|--|
| Primary Terminals          | <a href="#">#2-14 AWG</a>  |
| Secondary Voltage          | <a href="#">120/240</a>  |
| Secondary Max Current      | <a href="#">62.5A</a>  |
| Secondary Markings         | <a href="#">X1-X3-X2-X4</a>  |
| Secondary Terminals        | <a href="#">#2-14 AWG</a>  |
| Primary Taps               | <a href="#">+/- 1 x 5%</a>   |
| Conductor Material         | <a href="#">Copper</a>   |
| Insulation Class           | <a href="#">220°C</a>  |
| BIL (Insulation) Level     | <a href="#">10kV</a>   |
| Impedance                  | <a href="#">5.5 – 7.0%</a>   |
| Sound (db)                 | <a href="#">40</a>   |
| Enclosure Type             | <a href="#">NEMA 3R Indoor</a>   |
| Enclosure                  | <a href="#">E3R-4</a>  |
| Finish                     | <a href="#">Polyster Powder Coat – ANSI/ASA 61 Grey</a>  |
| Standards & Certifications | <a href="#">CSA Certified File No. LR34493, UL Listed File No. E108255, ISO 9001:2015 Registered</a> |
| Efficiency                 | <a href="#">N/A</a>  |