



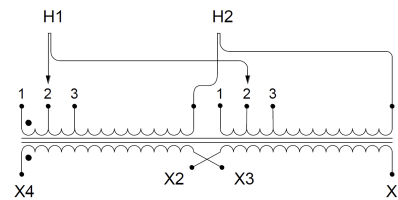
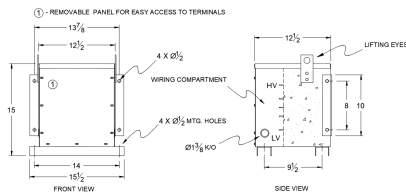
SC7.5H-K/EP

~~1,497.98 USD~~ 1,423.08 USD

SKU: d490c73ecafd

Categories: [Encapsulated Isolation Transformer](#)

SCHEMATIC/DIAGRAM AND DIMENSION PICTURES



PRODUCT SPECIFICATIONS

Weight	210 lbs
Phases	1
kVA	7.5
Connection	1Ph-2coil-3t-SD
Primary Voltage	480
Primary Max Current	15.6A
Primary Markings	H1-H2



Primary Terminals	#2-14 AWG
Secondary Voltage	120/240
Secondary Max Current	62.5A
Secondary Markings	X1-X3-X2-X4
Secondary Terminals	#2-14 AWG
Primary Taps	+/- 1 x 5%
Conductor Material	Copper
Temperature Rise	130°C
Insulation Class	200°C
BIL (Insulation) Level	10kV
Efficiency	N/A
Impedance	1.5 – 3.5%
Sound (db)	40
Enclosure Type	NEMA 3R Indoor
Enclosure	E3R-1PEP-4
Finish	Polyster Powder Coat – ANSI/ASA 61 Grey
Standards & Certifications	CSA Certified File No. LR34493, UL Listed File No. E108255, ISO 9001:2015 Registered