



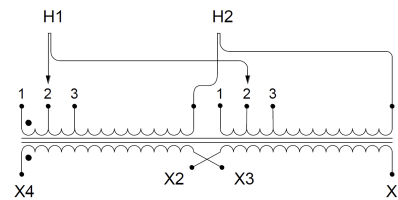
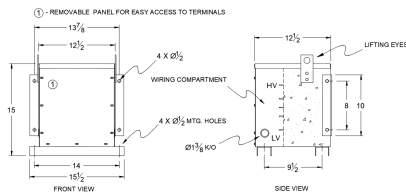
SC5H1-K/EP

\$1,714.00 CAD

SKU: 42d1c2cfdfe6

Categories: [Encapsulated Isolation Transformer](#)

SCHEMATIC/DIAGRAM AND DIMENSION PICTURES



PRODUCT SPECIFICATIONS

| | |
|---------------------|---------------------------------|
| Weight | 155 lbs |
| Phases | 1 |
| kVA | 5 |
| Connection | 1Ph-2coil-3t-SD |
| Primary Voltage | 460 |
| Primary Max Current | 10.9A |
| Primary Markings | H1-H2 |



| | |
|----------------------------|------------------------------------------------------------------------------------------------------|
| Primary Terminals | #2-14 AWG |
| Secondary Voltage | 120/240 |
| Secondary Max Current | 41.7A |
| Secondary Markings | X1-X3-X2-X4 |
| Secondary Terminals | #2-14 AWG |
| Primary Taps | +/- 1 x 5% |
| Conductor Material | Copper |
| Temperatue Rise | 115°C |
| Insuation Class | 180°C |
| BIL (Insulation) Level | 10kV |
| Efficiency | N/A |
| Impedance | 1.5 – 3.5% |
| Sound (db) | 40 |
| Enclosure Type | NEMA 3R Indoor |
| Enclosure | E3R-1PEP-4 |
| Finish | Polyster Powder Coat – ANSI/ASA 61 Grey |
| Standards & Certifications | CSA Certified File No. LR34493, UL Listed File No. E108255, ISO 9001:2015 Registered |