



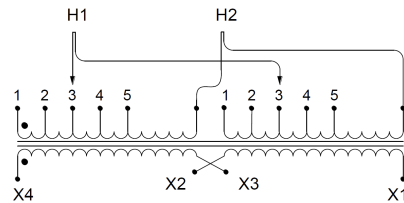
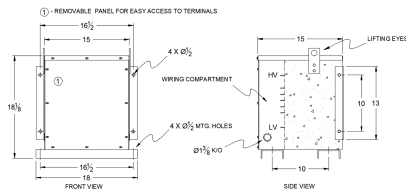
SC10J-K/EP

\$1,621.71 USD

SKU: 3d2af1055d62

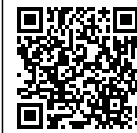
Categories: [Encapsulated Isolation Transformer](#)

SCHEMATIC/DIAGRAM AND DIMENSION PICTURES



PRODUCT SPECIFICATIONS

Weight	230 lbs
Phases	1
kVA	10
Connection	1Ph-2coil-5t-SD
Primary Voltage	600
Primary Max Current	16.7A
Primary Markings	H1-H2



Primary Terminals	#2-14 AWG
Secondary Voltage	120/240
Secondary Max Current	83.3A
Secondary Markings	X1-X3-X2-X4
Secondary Terminals	#2-14 AWG
Primary Taps	+/- 1 x 5%
Conductor Material	Copper
Temperatue Rise	130°C
Insuation Class	200°C
BIL (Insulation) Level	10kV
Efficiency	N/A
Impedance	1.5 – 3.5%
Sound (db)	45
Enclosure Type	NEMA 3R Indoor
Enclosure	E3R-1PEP-5
Finish	Polyster Powder Coat – ANSI/ASA 61 Grey
Standards & Certifications	CSA Certified File No. LR34493, UL Listed File No. E108255, ISO 9001:2015 Registered