



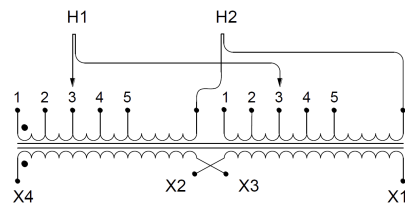
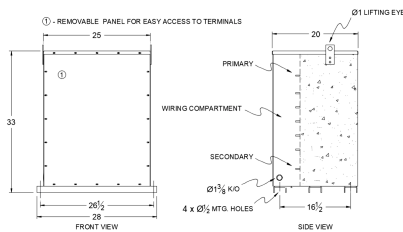
SC100J-K/EP

\$2,646.00 CAD

SKU: 689b95723408

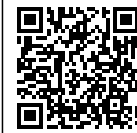
Categories: [Encapsulated Isolation Transformer](#)

SCHEMATIC/DIAGRAM AND DIMENSION PICTURES



PRODUCT SPECIFICATIONS

Weight	1460 lbs
Phases	1
kVA	100
Connection	1Ph-2coil-5t-SD
Primary Voltage	600
Primary Max Current	166.7A



Primary Markings	H1-H2
Primary Terminals	300MCM-6
Secondary Voltage	120/240
Secondary Max Current	833.3A
Secondary Markings	X1-X3-X2-X4
Secondary Terminals	Pads
Primary Taps	+/- 2 x 2.5%
Conductor Material	Copper
Insuation Class	200
BIL (Insulation) Level	10kV
Efficiency	N/A
Impedance	1.5 – 3.5%
Sound (db)	50
Enclosure Type	NEMA 3R Indoor
Enclosure	E3R-1PEP-8