



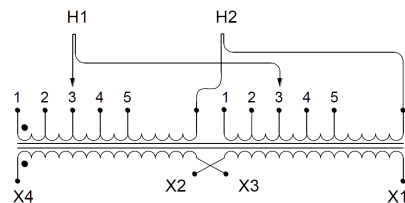
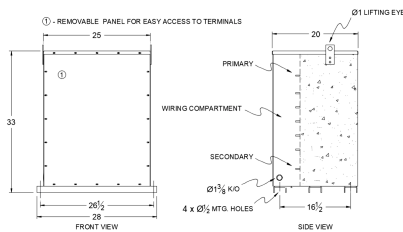
SC100J-K/EP

\$2,646.00 CAD

SKU: 689b95723408

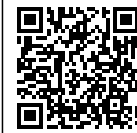
Categories: [Encapsulated Isolation Transformer](#)

SCHEMATIC/DIAGRAM AND DIMENSION PICTURES



PRODUCT SPECIFICATIONS

| | |
|---------------------|---------------------------------|
| Weight | 1460 lbs |
| Phases | 1 |
| kVA | 100 |
| Connection | 1Ph-2coil-5t-SD |
| Primary Voltage | 600 |
| Primary Max Current | 166.7A |



| | |
|------------------------|--------------------------------|
| Primary Markings | H1-H2 |
| Primary Terminals | 300MCM-6 |
| Secondary Voltage | 120/240 |
| Secondary Max Current | 833.3A |
| Secondary Markings | X1-X3-X2-X4 |
| Secondary Terminals | Pads |
| Primary Taps | +/- 2 x 2.5% |
| Conductor Material | Copper |
| Insuation Class | 200 |
| BIL (Insulation) Level | 10kV |
| Efficiency | N/A |
| Impedance | 1.5 – 3.5% |
| Sound (db) | 50 |
| Enclosure Type | NEMA 3R Indoor |
| Enclosure | E3R-1PEP-8 |