



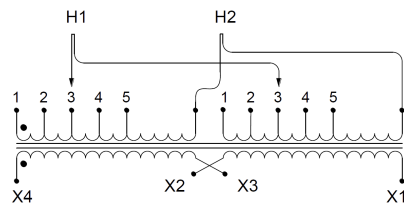
SC100H1-K/EP

\$10,803.00 CAD

SKU: cfae5755d26c

Categories: [Encapsulated Isolation Transformer](#)

SCHEMATIC/DIAGRAM AND DIMENSION PICTURES



PRODUCT SPECIFICATIONS

Weight	1460 lbs
Phases	1
kVA	100
Connection	1Ph-2coil-5t-SD
Primary Voltage	460
Primary Max Current	217.4A



Primary Markings	H1-H2
Primary Terminals	600MCM-2
Secondary Voltage	120/240
Secondary Max Current	833.3A
Secondary Markings	X1-X3-X2-X4
Secondary Terminals	Pads
Primary Taps	+/- 2 x 2.5%
Conductor Material	Copper
Temperatue Rise	130°C
Insuation Class	200°C
BIL (Insulation) Level	10kV
Efficiency	N/A
Impedance	1.5 – 3.5%
Sound (db)	50
Enclosure Type	NEMA 3R Indoor
Enclosure	E3R-1PEP-8
Finish	Polyster Powder Coat – ANSI/ASA 61 Grey
Standards & Certifications	CSA Certified File No. LR34493, UL Listed File No. E108255, ISO 9001:2015 Registered