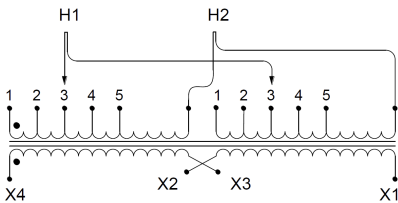
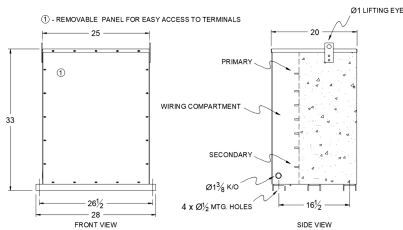


# SC100H1-K/EP

## \$10,803.00 CAD

SKU: cfae5755d26c  
Categories: [Encapsulated Isolation Transformer](#)

### SCHEMATIC/DIAGRAM AND DIMENSION PICTURES



### PRODUCT SPECIFICATIONS

Weight	1460 lbs
Phases	<a href="#">1</a>
kVA	<a href="#">100</a>
Connection	<a href="#">1Ph-2coil-5t-SD</a>
Primary Voltage	<a href="#">460</a>
Primary Max Current	<a href="#">217.4A</a>



Primary Markings	<a href="#">H1-H2</a>
Primary Terminals	<a href="#">600MCM-2</a>
Secondary Voltage	<a href="#">120/240</a>
Secondary Max Current	<a href="#">833.3A</a>
Secondary Markings	<a href="#">X1-X3-X2-X4</a>
Secondary Terminals	<a href="#">Pads</a>
Primary Taps	<a href="#">+/- 2 x 2.5%</a>
Conductor Material	<a href="#">Copper</a>
Temperatue Rise	<a href="#">130°C</a>
Insuation Class	<a href="#">200°C</a>
BIL (Insulation) Level	<a href="#">10kV</a>
Efficiency	<a href="#">N/A</a>
Impedance	<a href="#">1.5 – 3.5%</a>
Sound (db)	<a href="#">50</a>
Enclosure Type	<a href="#">NEMA 3R Indoor</a>
Enclosure	<a href="#">E3R-1PEP-8</a>
Finish	<a href="#">Polyster Powder Coat – ANSI/ASA 61 Grey</a>
Standards & Certifications	<a href="#">CSA Certified File No. LR34493, UL Listed File No. E108255, ISO 9001:2015 Registered</a>