



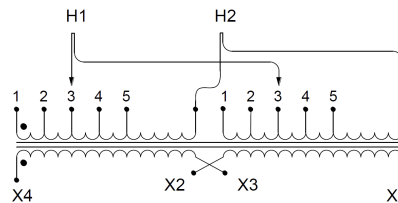
## SA15J-K2/Z3

**\$1,855.00 CAD**

SKU: 01236e94a612

Categories: [Isolation Transformers](#)

### SCHEMATIC/DIAGRAM AND DIMENSION PICTURES



### PRODUCT SPECIFICATIONS

|                            |                                 |
|----------------------------|---------------------------------|
| <b>Weight</b>              | 145 lbs                         |
| <b>Phases</b>              | <a href="#">1</a>               |
| <b>kVA</b>                 | <a href="#">15</a>              |
| <b>Connection</b>          | <a href="#">1Ph-2coil-5t-SD</a> |
| <b>Primary Voltage</b>     | <a href="#">600</a>             |
| <b>Primary Max Current</b> | <a href="#">25A</a>             |
| <b>Primary Markings</b>    | <a href="#">H1-H2</a>           |



|                                       |  |
|---------------------------------------|--|
| <b>Primary Terminals</b>              | <a href="#">#2-14 AWG</a>  |
| <b>Secondary Voltage</b>              | <a href="#">110/220</a>  |
| <b>Secondary Max Current</b>          | <a href="#">136.4A</a>   |
| <b>Secondary Markings</b>             | <a href="#">X1-X3-X2-X4</a>  |
| <b>Secondary Terminals</b>            | <a href="#">#2-14 AWG</a>  |
| <b>Primary Taps</b>                   | <a href="#">+/- 2 x 2.5%</a>   |
| <b>Conductor Material</b>             | <a href="#">Aluminum</a>   |
| <b>Insulation Class</b>               | <a href="#">220°C</a>  |
| <b>BIL (Insulation) Level</b>         | <a href="#">10kV</a>   |
| <b>Impedance</b>                      | <a href="#">4.0 – 6.0%</a>   |
| <b>Sound (db)</b>                     | <a href="#">45</a>   |
| <b>Enclosure Type</b>                 | <a href="#">NEMA 3R Indoor</a>   |
| <b>Enclosure</b>                      | <a href="#">E3R-4</a>  |
| <b>Finish</b>                         | <a href="#">Polyster Powder Coat – ANSI/ASA 61 Grey</a>  |
| <b>Standards &amp; Certifications</b> | <a href="#">CSA Certified File No. LR34493, UL Listed File No. E108255, ISO 9001:2015 Registered</a> |
| <b>Efficiency</b>                     | <a href="#">97.70%</a>   |