

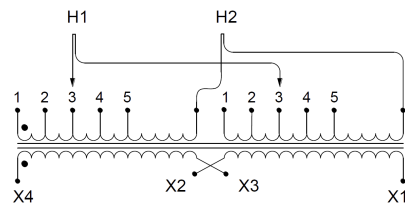
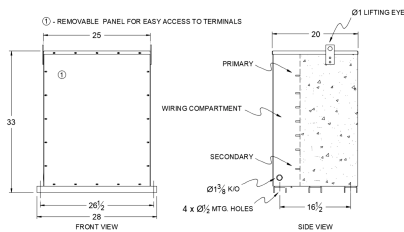
**SA100H1-K/EP**

**\$6,967.74 USD**

**SKU:** 5ced161075bb

**Categories:** [Encapsulated Isolation Transformer](#)

## SCHEMATIC/DIAGRAM AND DIMENSION PICTURES



## PRODUCT SPECIFICATIONS

|                            |                                 |
|----------------------------|---------------------------------|
| <b>Weight</b>              | 1460 lbs                        |
| <b>Phases</b>              | <a href="#">1</a>               |
| <b>kVA</b>                 | <a href="#">100</a>             |
| <b>Connection</b>          | <a href="#">1Ph-2coil-5t-SD</a> |
| <b>Primary Voltage</b>     | <a href="#">460</a>             |
| <b>Primary Max Current</b> | <a href="#">217.4A</a>          |



|                            |  |
|----------------------------|--|
| Primary Markings           | <a href="#">H1-H2</a>  |
| Primary Terminals          | <a href="#">600MCM-2</a>   |
| Secondary Voltage          | <a href="#">120/240</a>  |
| Secondary Max Current      | <a href="#">833.3A</a>   |
| Secondary Markings         | <a href="#">X1-X3-X2-X4</a>  |
| Secondary Terminals        | <a href="#">Pads</a>   |
| Primary Taps               | <a href="#">+/- 2 x 2.5%</a>   |
| Conductor Material         | <a href="#">Aluminum</a>   |
| Temperatue Rise            | <a href="#">130°C</a>  |
| Insuation Class            | <a href="#">200°C</a>  |
| BIL (Insulation) Level     | <a href="#">10kV</a>   |
| Efficiency                 | <a href="#">N/A</a>  |
| Impedance                  | <a href="#">1.5 – 3.5%</a>   |
| Sound (db)                 | <a href="#">50</a>   |
| Enclosure Type             | <a href="#">NEMA 3R Indoor</a>   |
| Enclosure                  | <a href="#">E3R-1PEP-8</a>   |
| Finish                     | <a href="#">Polyster Powder Coat – ANSI/ASA 61 Grey</a>  |
| Standards & Certifications | <a href="#">CSA Certified File No. LR34493, UL Listed File No. E108255, ISO 9001:2015 Registered</a> |