



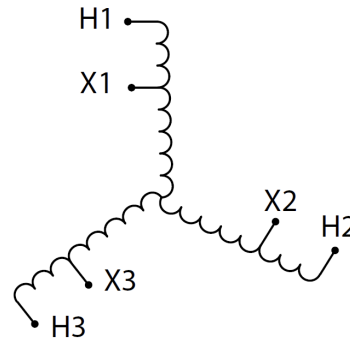
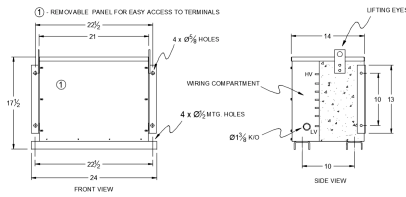
RC75J-H/EP

\$2,825.10 USD

SKU: 7c2e6b2efe9b

Categories: [Encapsulated Autotransformer](#)

SCHEMATIC/DIAGRAM AND DIMENSION PICTURES



PRODUCT SPECIFICATIONS

Weight	560 lbs
Phases	3
kVA	75
Connection	3PhA-NT-1
Primary Voltage	600
Primary Max Current	72.2A



Primary Markings	H1-H2-H3
Primary Terminals	#2/0-6 AWG
Secondary Voltage	480
Secondary Max Current	90.2A
Secondary Markings	X1-X2-X3
Secondary Terminals	#2/0-6 AWG
Primary Taps	N/A
Conductor Material	Copper
Insulation Class	200°C
BIL (Insulation) Level	10kV
Impedance	0.5 – 1.5%
Sound (db)	45
Enclosure Type	NEMA 3R Indoor
Enclosure	E3R-3PEP-4
Finish	Polyster Powder Coat – ANSI/ASA 61 Grey
Standards & Certifications	CSA Certified File No. LR34493, UL Listed File No. E108255, ISO 9001:2015 Registered