

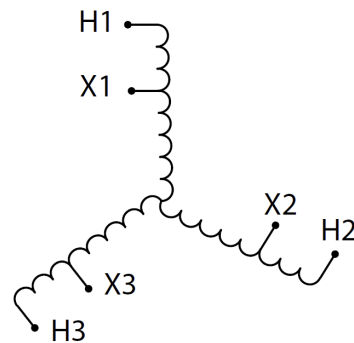
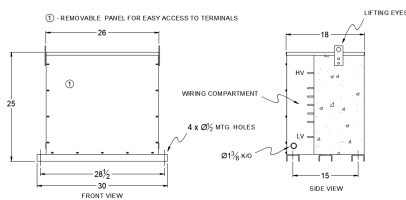
## RC75J-C/EP

**\$9,191.00 CAD**

SKU: 75e460974167

Categories: [Encapsulated Autotransformer](#)

### SCHEMATIC/DIAGRAM AND DIMENSION PICTURES



### PRODUCT SPECIFICATIONS

Weight	830 lbs
Phases	<a href="#">3</a>
kVA	<a href="#">75</a>
Connection	<a href="#">3PhA-NT-1</a>
Primary Voltage	<a href="#">600</a>



Primary Max Current	<a href="#">72.2A</a>
Primary Markings	<a href="#">H1-H2-H3</a>
Primary Terminals	<a href="#">#2/0-6 AWG</a>
Secondary Voltage	<a href="#">240</a>
Secondary Max Current	<a href="#">180.4A</a>
Secondary Markings	<a href="#">X1-X2-X3</a>
Secondary Terminals	<a href="#">300MCM-6</a>
Primary Taps	<a href="#">N/A</a>
Conductor Material	<a href="#">Copper</a>
Insuation Class	<a href="#">200°C</a>
BIL (Insulation) Level	<a href="#">10kV</a>
Impedance	<a href="#">0.5 – 1.5%</a>
Sound (db)	<a href="#">45</a>
Enclosure Type	<a href="#">NEMA 3R Indoor</a>
Enclosure	<a href="#">E3R-3PEP-6</a>
Finish	<a href="#">Polyster Powder Coat – ANSI/ASA 61 Grey</a>
Standards & Certifications	<a href="#">CSA Certified File No. LR34493, UL Listed File No. E108255, ISO 9001:2015 Registered</a>