

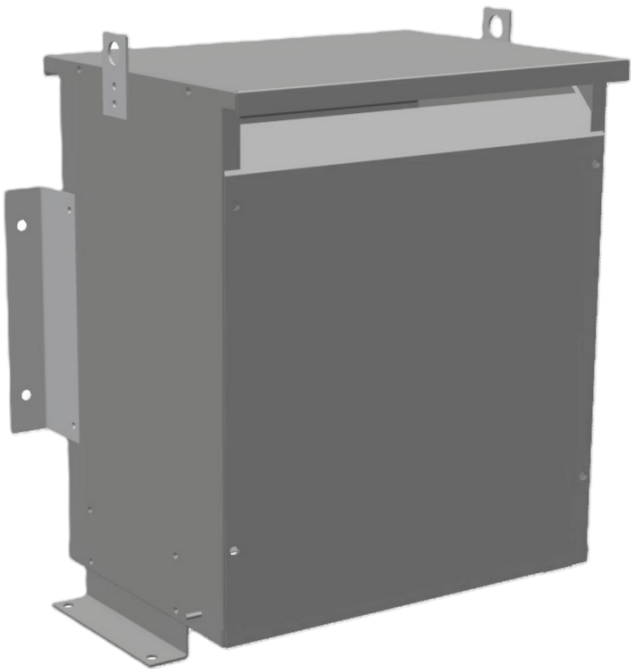


RC45J-C

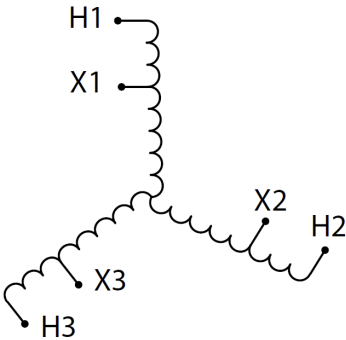
\$3,978.00 CAD

SKU: 34e28508f985

Categories: [Autotransformer](#)



SCHEMATIC/DIAGRAM AND DIMENSION PICTURES



PRODUCT SPECIFICATIONS

Weight	270 lbs
Phases	3
kVA	45
Connection	3PhA-NT-1



Primary Voltage	600
Primary Max Current	43.3A
Primary Markings	H1-H2-H3
Primary Terminals	#2-14 AWG
Secondary Voltage	240
Secondary Max Current	108.3A
Secondary Markings	X1-X2-X3
Secondary Terminals	300MCM-6
Primary Taps	N/A
Conductor Material	Copper
Insuation Class	220°C
BIL (Insulation) Level	10kV
Efficiency	N/A
Impedance	1.5 – 3.5%
Sound (db)	45
Enclosure Type	NEMA 3R Indoor
Enclosure	E3R-5
Finish	Polyster Powder Coat – ANSI/ASA 61 Grey
Standards & Certifications	CSA Certified File No. LR34493, UL Listed File No. E108255, ISO 9001:2015 Registered