

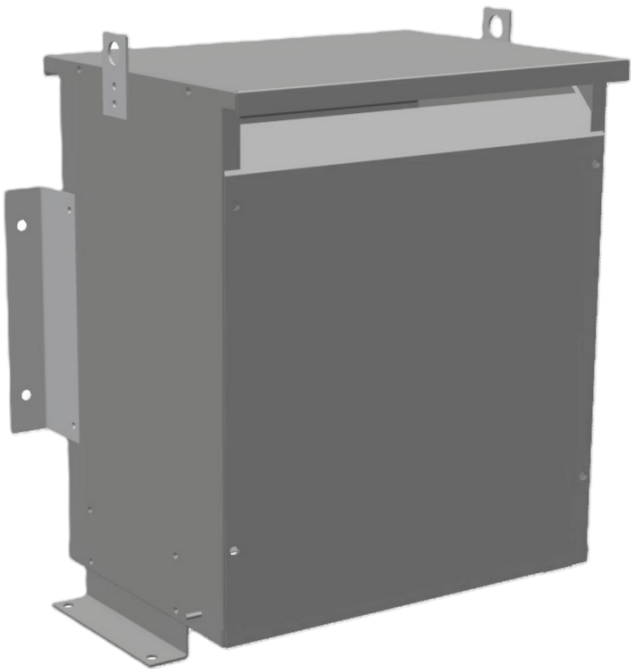


RC30J-C

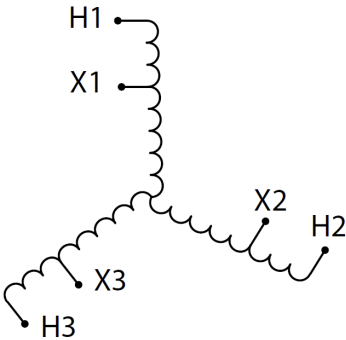
\$3,301.00 CAD

SKU: 4095e7e5066a

Categories: [Autotransformer](#)



SCHEMATIC/DIAGRAM AND DIMENSION PICTURES



PRODUCT SPECIFICATIONS

Weight	245 lbs
Phases	<a href="#">3</a>
kVA	<a href="#">30</a>
Connection	<a href="#">3PhA-NT-1</a>



Primary Voltage	<a href="#">600</a>
Primary Max Current	<a href="#">28.9A</a>
Primary Markings	<a href="#">H1-H2-H3</a>
Primary Terminals	<a href="#">#2-14 AWG</a>
Secondary Voltage	<a href="#">240</a>
Secondary Max Current	<a href="#">72.2A</a>
Secondary Markings	<a href="#">X1-X2-X3</a>
Secondary Terminals	<a href="#">#2/0-6 AWG</a>
Primary Taps	<a href="#">N/A</a>
Conductor Material	<a href="#">Copper</a>
Insuation Class	<a href="#">220°C</a>
BIL (Insulation) Level	<a href="#">10kV</a>
Efficiency	<a href="#">N/A</a>
Impedance	<a href="#">1.5 – 3.5%</a>
Sound (db)	<a href="#">45</a>
Enclosure Type	<a href="#">NEMA 3R Indoor</a>
Enclosure	<a href="#">E3R-5</a>
Finish	<a href="#">Polyster Powder Coat – ANSI/ASA 61 Grey</a>
Standards & Certifications	<a href="#">CSA Certified File No. LR34493, UL Listed File No. E108255, ISO 9001:2015 Registered</a>