

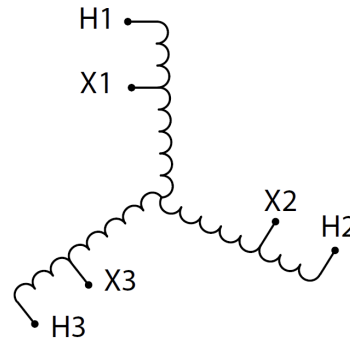
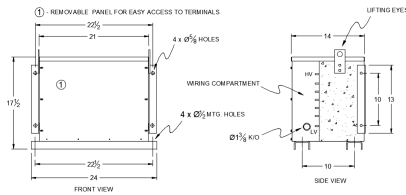
# RC30H-B/EP

## \$3,197.75 USD

SKU: cd1a9048a97d

Categories: [Encapsulated Autotransformer](#)

### SCHEMATIC/DIAGRAM AND DIMENSION PICTURES



### PRODUCT SPECIFICATIONS

<b>Weight</b>	560 lbs
<b>Phases</b>	<a href="#">3</a>
<b>kVA</b>	<a href="#">30</a>
<b>Connection</b>	<a href="#">3PhA-NT-1</a>
<b>Primary Voltage</b>	<a href="#">480</a>
<b>Primary Max Current</b>	<a href="#">36.1A</a>



<b>Primary Markings</b>	<a href="#">H1-H2-H3</a>
<b>Primary Terminals</b>	<a href="#">#2-14 AWG</a>
<b>Secondary Voltage</b>	<a href="#">208</a>
<b>Secondary Max Current</b>	<a href="#">83.3A</a>
<b>Secondary Markings</b>	<a href="#">X1-X2-X3</a>
<b>Secondary Terminals</b>	<a href="#">#2/0-6 AWG</a>
<b>Primary Taps</b>	<a href="#">N/A</a>
<b>Conductor Material</b>	<a href="#">Copper</a>
<b>Insulation Class</b>	<a href="#">200°C</a>
<b>BIL (Insulation) Level</b>	<a href="#">10kV</a>
<b>Impedance</b>	<a href="#">0.5 – 1.5%</a>
<b>Sound (db)</b>	<a href="#">45</a>
<b>Enclosure Type</b>	<a href="#">NEMA 3R Indoor</a>
<b>Enclosure</b>	<a href="#">E3R-3PEP-4</a>
<b>Finish</b>	<a href="#">Polyster Powder Coat – ANSI/ASA 61 Grey</a>
<b>Standards &amp; Certifications</b>	<a href="#">CSA Certified File No. LR34493, UL Listed File No. E108255, ISO 9001:2015 Registered</a>