



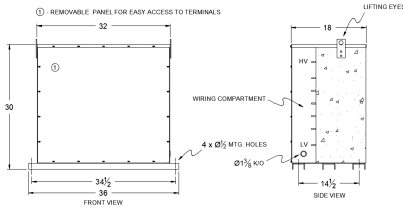
RC300J-H/EP

\$11,585.00 CAD

SKU: bc6652f3d6e2

Categories: [Encapsulated Autotransformer](#)

SCHEMATIC/DIAGRAM AND DIMENSION PICTURES



PRODUCT SPECIFICATIONS

Weight	1210 lbs
Phases	3
kVA	300
Connection	3PhA-NT-1
Primary Voltage	600



Primary Max Current	288.7A
Primary Markings	H1-H2-H3
Primary Terminals	Pads
Secondary Voltage	480
Secondary Max Current	360.8A
Secondary Markings	X1-X2-X3
Secondary Terminals	Pads
Primary Taps	N/A
Conductor Material	Copper
Insulation Class	200°C
BIL (Insulation) Level	10kV
Impedance	0.5 – 1.5%
Sound (db)	50
Enclosure Type	NEMA 3R Indoor
Enclosure	E3R-3PEP-7
Finish	Polyster Powder Coat – ANSI/ASA 61 Grey
Standards & Certifications	CSA Certified File No. LR34493, UL Listed File No. E108255, ISO 9001:2015 Registered