

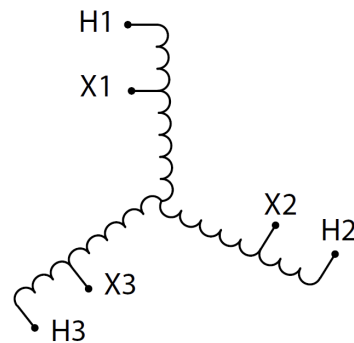
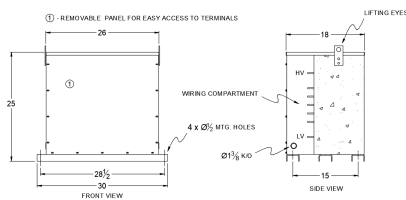
## RA75J-B/EP

**\$8,830.00 CAD**

SKU: 0a010f89822b

Categories: [Encapsulated Autotransformer](#)

### SCHEMATIC/DIAGRAM AND DIMENSION PICTURES



### PRODUCT SPECIFICATIONS

|                 |                           |
|-----------------|---------------------------|
| Weight          | 830 lbs                   |
| Phases          | <a href="#">3</a>         |
| kVA             | <a href="#">75</a>        |
| Connection      | <a href="#">3PhA-NT-1</a> |
| Primary Voltage | <a href="#">600</a>       |



|                            |  |
|----------------------------|--|
| Primary Max Current        | <a href="#">72.2A</a>  |
| Primary Markings           | <a href="#">H1-H2-H3</a>   |
| Primary Terminals          | <a href="#">#2/0-6 AWG</a>   |
| Secondary Voltage          | <a href="#">208</a>  |
| Secondary Max Current      | <a href="#">208.2A</a>   |
| Secondary Markings         | <a href="#">X1-X2-X3</a>   |
| Secondary Terminals        | <a href="#">600MCM-2</a>   |
| Primary Taps               | <a href="#">N/A</a>  |
| Conductor Material         | <a href="#">Aluminum</a>   |
| Insuation Class            | <a href="#">200°C</a>  |
| BIL (Insulation) Level     | <a href="#">10kV</a>   |
| Impedance                  | <a href="#">0.5 – 1.5%</a>   |
| Sound (db)                 | <a href="#">45</a>   |
| Enclosure Type             | <a href="#">NEMA 3R Indoor</a>   |
| Enclosure                  | <a href="#">E3R-3PEP-6</a>   |
| Finish                     | <a href="#">Polyster Powder Coat – ANSI/ASA 61 Grey</a>  |
| Standards & Certifications | <a href="#">CSA Certified File No. LR34493, UL Listed File No. E108255, ISO 9001:2015 Registered</a> |