



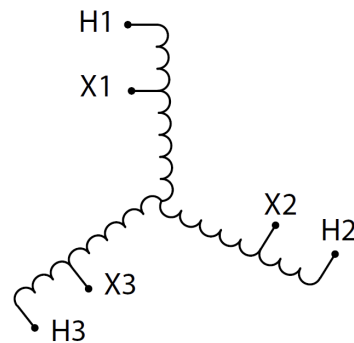
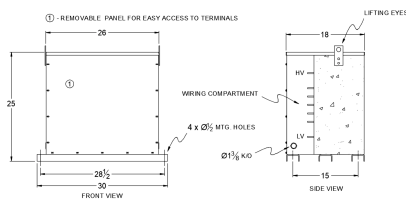
RA75H-C/EP

\$6,143.63 USD

SKU: 65d14412eee2

Categories: [Encapsulated Autotransformer](#)

SCHEMATIC/DIAGRAM AND DIMENSION PICTURES



PRODUCT SPECIFICATIONS

Weight	830 lbs
Phases	3
kVA	75
Connection	3PhA-NT-1
Primary Voltage	480



Primary Max Current	90.2A
Primary Markings	H1-H2-H3
Primary Terminals	#2/0-6 AWG
Secondary Voltage	240
Secondary Max Current	180.4A
Secondary Markings	X1-X2-X3
Secondary Terminals	300MCM-6
Primary Taps	N/A
Conductor Material	Aluminum
Insuation Class	200°C
BIL (Insulation) Level	10kV
Impedance	0.5 – 1.5%
Sound (db)	45
Enclosure Type	NEMA 3R Indoor
Enclosure	E3R-3PEP-6
Finish	Polyster Powder Coat – ANSI/ASA 61 Grey
Standards & Certifications	CSA Certified File No. LR34493, UL Listed File No. E108255, ISO 9001:2015 Registered