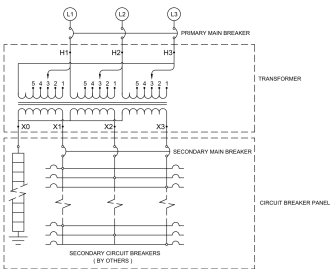
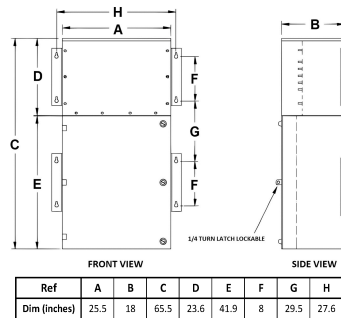


# MP3C45J-M

## \$13,953.90 USD

SKU: 1df2a68734cb  
Categories: [Mini Power Centers](#)

### SCHEMATIC/DIAGRAM AND DIMENSION PICTURES





## PRODUCT SPECIFICATIONS

Weight	960 lbs
Phases	<a href="#">3</a>
Circuit Breaker Suitability	<a href="#">Eaton Type BR</a>
kVA	<a href="#">45</a>
Connection	<a href="#">MPC3P-5t</a>
Incoming Voltage	<a href="#">600</a>
Primary Breaker	<a href="#">90A</a>
Interrupting Rating	<a href="#">14kAIC @ 600V</a>
Output Voltage	<a href="#">208Y/120</a>
Secondary Breaker	<a href="#">150A</a>
Short Circuit Withstand	<a href="#">25kAIC @ 240V</a>
Primary Taps	<a href="#">+/- 2 x 2.5%</a>
Conductor Material	<a href="#">Copper</a>
Insuation Class	<a href="#">200°C</a>
Panel Board	<a href="#">Push-On</a>
Load Center Bus Material	<a href="#">Aluminum</a>
# of Circuits	<a href="#">30</a>
Impedance	<a href="#">1.5 – 3.0%</a>
Temperatue Rise	<a href="#">130°C</a>
Enclosure	<a href="#">E3R-3PMPC-4</a>
Enclosure Type	<a href="#">E3R Outdoor</a>
Finish	<a href="#">Polyster Powder Coat – ANSI/ASA 61 Grey</a>
Standards & Certifications	<a href="#">CSA Certified File No. LR34493, UL Listed File No. E495724, ISO 9001:2015 Registered</a>