

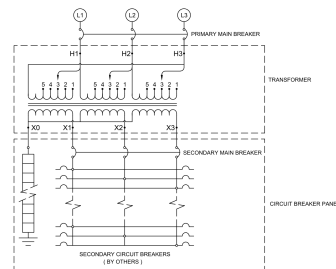
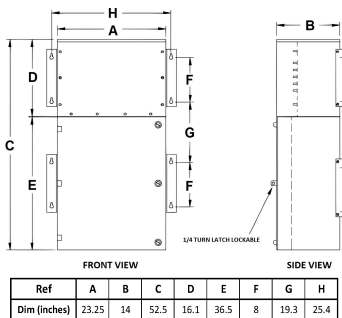
# MP3C15H-M

**\$7,908.21 USD**

SKU: 8629f33c94c5

Categories: [Mini Power Centers](#)

## SCHEMATIC/DIAGRAM AND DIMENSION PICTURES





**PRODUCT SPECIFICATIONS**

|                                       |                                                                                                      |
|---------------------------------------|------------------------------------------------------------------------------------------------------|
| <b>Weight</b>                         | 475 lbs                                                                                              |
| <b>Phases</b>                         | <a href="#">3</a>                                                                                    |
| <b>Circuit Breaker Suitability</b>    | <a href="#">Eaton Type BR</a>                                                                        |
| <b>kVA</b>                            | <a href="#">15</a>                                                                                   |
| <b>Connection</b>                     | <a href="#">MPC3P-5t</a>                                                                             |
| <b>Incoming Voltage</b>               | <a href="#">480</a>                                                                                  |
| <b>Primary Breaker</b>                | <a href="#">40A</a>                                                                                  |
| <b>Interrupting Rating</b>            | <a href="#">14kAIC @ 480V</a>                                                                        |
| <b>Output Voltage</b>                 | <a href="#">208Y/120</a>                                                                             |
| <b>Secondary Breaker</b>              | <a href="#">50A</a>                                                                                  |
| <b>Short Circuit Withstand</b>        | <a href="#">10kAIC @ 240V</a>                                                                        |
| <b>Primary Taps</b>                   | <a href="#">+/- 2 x 2.5%</a>                                                                         |
| <b>Conductor Material</b>             | <a href="#">Copper</a>                                                                               |
| <b>Insuation Class</b>                | <a href="#">200°C</a>                                                                                |
| <b>Panel Board</b>                    | <a href="#">Push-On</a>                                                                              |
| <b>Load Center Bus Material</b>       | <a href="#">Aluminum</a>                                                                             |
| <b># of Circuits</b>                  | <a href="#">27</a>                                                                                   |
| <b>Impedance</b>                      | <a href="#">1.5 – 3.0%</a>                                                                           |
| <b>Temperatue Rise</b>                | <a href="#">130°C</a>                                                                                |
| <b>Enclosure</b>                      | <a href="#">E3R-3PMPC-2</a>                                                                          |
| <b>Enclosure Type</b>                 | <a href="#">E3R Outdoor</a>                                                                          |
| <b>Finish</b>                         | <a href="#">Polyster Powder Coat – ANSI/ASA 61 Grey</a>                                              |
| <b>Standards &amp; Certifications</b> | <a href="#">CSA Certified File No. LR34493, UL Listed File No. E495724, ISO 9001:2015 Registered</a> |