

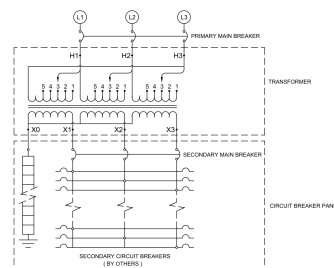
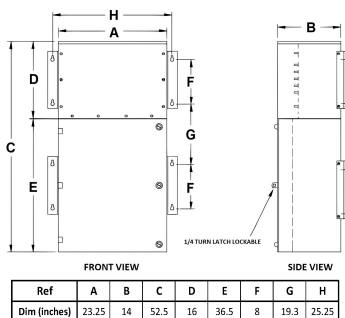
## MP3C15H-M/BO/CLC

### \$12,613.00 CAD

SKU: 2128cde6b303

Categories: [Mini Power Centers](#)

#### SCHEMATIC/DIAGRAM AND DIMENSION PICTURES





## PRODUCT SPECIFICATIONS

|                             |  |
|-----------------------------|--|
| Weight                      | 475 lbs  |
| Phases                      | <a href="#">3</a>  |
| Circuit Breaker Suitability | <a href="#">Eaton Type BAB</a>   |
| kVA                         | <a href="#">15</a>   |
| Connection                  | <a href="#">MPC3P-5t</a>   |
| Incoming Voltage            | <a href="#">480</a>  |
| Primary Breaker             | <a href="#">40A</a>  |
| Interrupting Rating         | <a href="#">14kAIC @ 480V</a>  |
| Output Voltage              | <a href="#">208Y/120</a>   |
| Secondary Breaker           | <a href="#">50A</a>  |
| Short Circuit Withstand     | <a href="#">10kAIC @ 240V</a>  |
| Primary Taps                | <a href="#">+/- 2 x 2.5%</a>   |
| Conductor Material          | <a href="#">Copper</a>   |
| Insuation Class             | <a href="#">200°C</a>  |
| Panel Board                 | <a href="#">Bolt-On</a>  |
| Load Center Bus Material    | <a href="#">Copper</a>   |
| # of Circuits               | <a href="#">30</a>   |
| Impedance                   | <a href="#">1.5 – 3.0%</a>   |
| Temperatue Rise             | <a href="#">130°C</a>  |
| Enclosure                   | <a href="#">E3R-3PMPC-2B</a>   |
| Enclosure Type              | <a href="#">E3R Outdoor</a>  |
| Finish                      | <a href="#">Polyster Powder Coat – ANSI/ASA 61 Grey</a>                  |
| Standards & Certifications  | <a href="#">CSA Certified File No. LR34493, ISO 9001:2015 Registered</a> |