

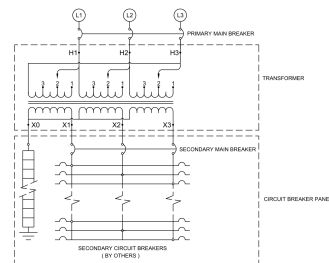
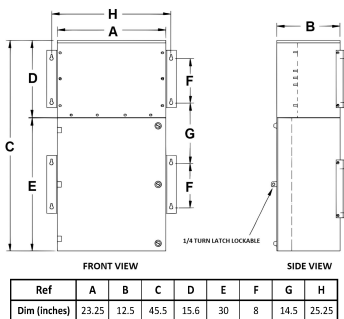
# MP39J-M/BO/CLC

## \$12,631.00 CAD

SKU: 0f710a9e3102

Categories: [Mini Power Centers](#)

### SCHEMATIC/DIAGRAM AND DIMENSION PICTURES





**PRODUCT SPECIFICATIONS**

|                                       |  |
|---------------------------------------|--|
| <b>Weight</b>                         | 315 lbs  |
| <b>Phases</b>                         | <a href="#">3</a>  |
| <b>Circuit Breaker Suitability</b>    | <a href="#">Eaton Type BAB</a>   |
| <b>kVA</b>                            | <a href="#">9</a>  |
| <b>Connection</b>                     | <a href="#">MPC3P-3t</a>   |
| <b>Incoming Voltage</b>               | <a href="#">600</a>  |
| <b>Primary Breaker</b>                | <a href="#">20A</a>  |
| <b>Interrupting Rating</b>            | <a href="#">14kAIC @ 600V</a>  |
| <b>Output Voltage</b>                 | <a href="#">208Y/120</a>   |
| <b>Secondary Breaker</b>              | <a href="#">30A</a>  |
| <b>Short Circuit Withstand</b>        | <a href="#">10kAIC @ 240V</a>  |
| <b>Primary Taps</b>                   | <a href="#">+/- 1 x 5%</a>   |
| <b>Conductor Material</b>             | <a href="#">Copper</a>   |
| <b>Insuation Class</b>                | <a href="#">200°C</a>  |
| <b>Panel Board</b>                    | <a href="#">Bolt-On</a>  |
| <b>Load Center Bus Material</b>       | <a href="#">Copper</a>   |
| <b># of Circuits</b>                  | <a href="#">18</a>   |
| <b>Impedance</b>                      | <a href="#">1.5 – 3.0%</a>   |
| <b>Temperatue Rise</b>                | <a href="#">130°C</a>  |
| <b>Enclosure</b>                      | <a href="#">E3R-3PMPC-1B</a>   |
| <b>Enclosure Type</b>                 | <a href="#">E3R Outdoor</a>  |
| <b>Finish</b>                         | <a href="#">Polyster Powder Coat – ANSI/ASA 61 Grey</a>                  |
| <b>Standards &amp; Certifications</b> | <a href="#">CSA Certified File No. LR34493, ISO 9001:2015 Registered</a> |