

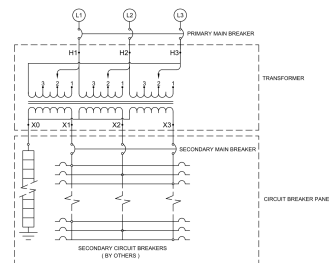
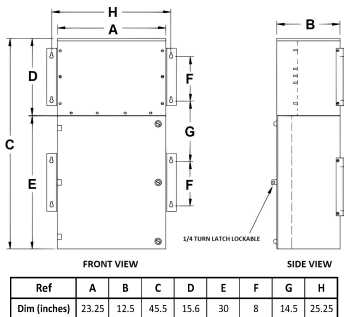
MP39J-M/BO/CLC

\$12,631.00 CAD

SKU: 0f710a9e3102

Categories: [Mini Power Centers](#)

SCHEMATIC/DIAGRAM AND DIMENSION PICTURES





PRODUCT SPECIFICATIONS

| | |
|---------------------------------------|--|
| Weight | 315 lbs |
| Phases | 3 |
| Circuit Breaker Suitability | Eaton Type BAB |
| kVA | 9 |
| Connection | MPC3P-3t |
| Incoming Voltage | 600 |
| Primary Breaker | 20A |
| Interrupting Rating | 14kAIC @ 600V |
| Output Voltage | 208Y/120 |
| Secondary Breaker | 30A |
| Short Circuit Withstand | 10kAIC @ 240V |
| Primary Taps | +/- 1 x 5% |
| Conductor Material | Copper |
| Insulation Class | 200°C |
| Panel Board | Bolt-On |
| Load Center Bus Material | Copper |
| # of Circuits | 18 |
| Impedance | 1.5 – 3.0% |
| Temperature Rise | 130°C |
| Enclosure | E3R-3PMPC-1B |
| Enclosure Type | E3R Outdoor |
| Finish | Polyster Powder Coat – ANSI/ASA 61 Grey |
| Standards & Certifications | CSA Certified File No. LR34493, ISO 9001:2015 Registered |