

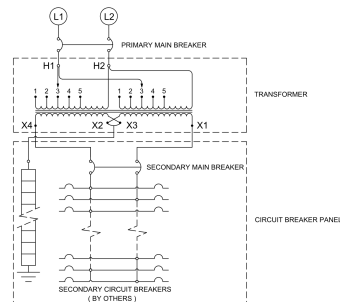
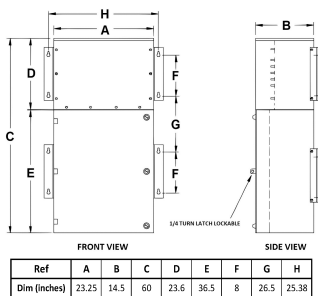
## MP1C30J-K/BO/CLC

### \$11,178.88 USD

SKU: 29411224671f

Categories: [Mini Power Centers](#)

#### SCHEMATIC/DIAGRAM AND DIMENSION PICTURES





## PRODUCT SPECIFICATIONS

Weight	780 lbs
Phases	<a href="#">1</a>
Circuit Breaker Suitability	<a href="#">Eaton Type BAB</a>
kVA	<a href="#">30</a>
Connection	<a href="#">MPC1P-5t</a>
Incoming Voltage	<a href="#">600</a>
Primary Breaker	<a href="#">100A</a>
Interrupting Rating	<a href="#">14kAIC @ 600V</a>
Output Voltage	<a href="#">120/240</a>
Secondary Breaker	<a href="#">150A</a>
Short Circuit Withstand	<a href="#">25kAIC @ 240V</a>
Primary Taps	<a href="#">+/- 2 x 2.5%</a>
Conductor Material	<a href="#">Copper</a>
Insuation Class	<a href="#">200°C</a>
Panel Board	<a href="#">Bolt-On</a>
Load Center Bus Material	<a href="#">Copper</a>
# of Circuits	<a href="#">30</a>
Impedance	<a href="#">1.5 – 3.0%</a>
Temperatue Rise	<a href="#">130°C</a>
Enclosure	<a href="#">E3R-1PMPC-3B</a>
Enclosure Type	<a href="#">E3R Outdoor</a>
Finish	<a href="#">Polyster Powder Coat – ANSI/ASA 61 Grey</a>
Standards & Certifications	<a href="#">CSA Certified File No. LR34493, ISO 9001:2015 Registered</a>