

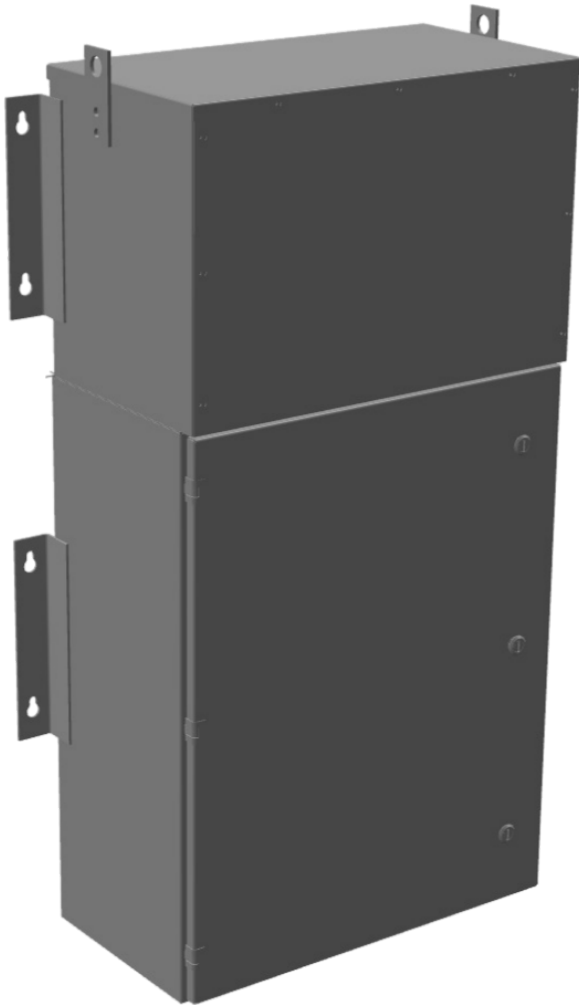


## 9KVA 600 VOLTS TO 208Y/120 VOLTS THREE PHASE PUSH-ON BREAKER MINI POWER CENTER

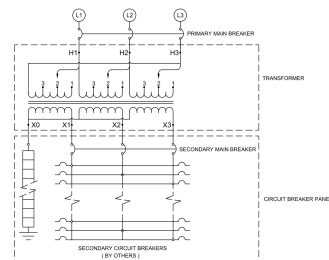
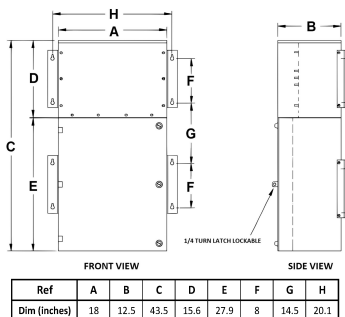
**\$8,573.00 CAD**

SKU: MP3C9J-M

Categories: [Mini Power Centers](#)



### SCHEMATIC/DIAGRAM AND DIMENSION PICTURES



9KVA 600 VOLTS TO 208Y/120 VOLTS  
THREE PHASE PUSH-ON BREAKER  
MINI POWER CENTER



## PRODUCT SPECIFICATIONS

|                             |  |
|-----------------------------|--|
| Weight                      | 315 lbs  |
| Phases                      | <a href="#">3</a>  |
| kVA                         | <a href="#">9</a>  |
| Connection                  | <a href="#">MPC3P-3t</a>   |
| Primary Taps                | <a href="#">+/- 1 x 5%</a>   |
| Conductor Material          | <a href="#">Copper</a>   |
| BIL (Insulation) Level      | <a href="#">10kV</a>   |
| Impedance Range             | <a href="#">1.5 – 3.0%</a>   |
| Enclosure Type              | <a href="#">NEMA 3R Outdoor</a>  |
| Enclosure Size              | <a href="#">E3R-3PMPC-1</a>  |
| Finish/Colour               | <a href="#">Polyester Powder Coat – ANSI/ASA 61 Grey</a>   |
| Standards & Certifications  | <a href="#">CSA Certified File No. LR34493, UL Listed File No. E495724, ISO 9001:2015 Registered</a> |
| Incoming Voltage            | <a href="#">600</a>  |
| Primary Breaker             | <a href="#">20A</a>  |
| Interrupting Rating         | <a href="#">14kAIC @ 600V</a>  |
| Output Voltage              | <a href="#">208Y/120</a>   |
| Secondary Breaker           | <a href="#">30A</a>  |
| Short Circuit Withstand     | <a href="#">10kAIC @ 240V</a>  |
| Panel Board                 | <a href="#">Push-On</a>  |
| Load Center Bus Material    | <a href="#">Aluminum</a>   |
| # of Circuits               | <a href="#">12</a>   |
| Circuit Breaker Suitability | <a href="#">Eaton Type BR</a>  |
| Temperatue Rise             | <a href="#">130°C</a>  |
| Insuation Class             | <a href="#">200°C (Class N)</a>  |



OFFICIAL QUOTE

9KVA 600 VOLTS TO 208Y/120 VOLTS  
THREE PHASE PUSH-ON BREAKER  
MINI POWER CENTER



|                      |                            |
|----------------------|----------------------------|
| Country/Manufacturer | <a href="#">Canada/RPM</a> |
|----------------------|----------------------------|