

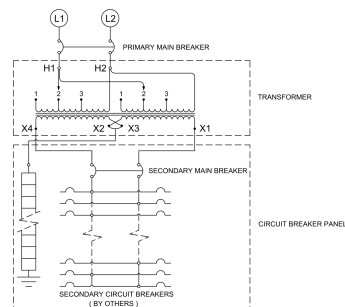
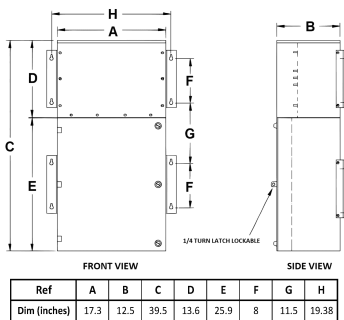
7.5KVA 600 VOLTS TO 120/240 VOLTS SINGLE PHASE PUSH-ON BREAKER MINI POWER CENTER

\$6,316.00 CAD

SKU: MP1C7J-K

Categories: [Mini Power Centers](#)

SCHEMATIC/DIAGRAM AND DIMENSION PICTURES



PRODUCT SPECIFICATIONS



7.5KVA 600 VOLTS TO 120/240 VOLTS
SINGLE PHASE PUSH-ON BREAKER
MINI POWER CENTER

Weight	275 lbs
Phases	1
kVA	7.5
Connection	MPC1P-3t
Primary Taps	+/- 1 x 5%
Conductor Material	Copper
BIL (Insulation) Level	10kV
Impedance Range	1.5 – 3.0%
Enclosure Type	NEMA 3R Outdoor
Enclosure Size	E3R-1PMPC-1
Finish/Colour	Polyester Powder Coat – ANSI/ASA 61 Grey
Standards & Certifications	CSA Certified File No. LR34493, UL Listed File No. E495724, ISO 9001:2015 Registered
Incoming Voltage	600
Primary Breaker	30A
Interrupting Rating	14kAIC @ 600V
Output Voltage	120/240
Secondary Breaker	40A
Short Circuit Withstand	10kAIC @ 240V
Panel Board	Push-On
Load Center Bus Material	Aluminum
# of Circuits	12
Circuit Breaker Suitability	Eaton Type BR
Temperatue Rise	130°C
Insuation Class	200°C (Class N)
Country/Manufacturer	Canada/RPM