



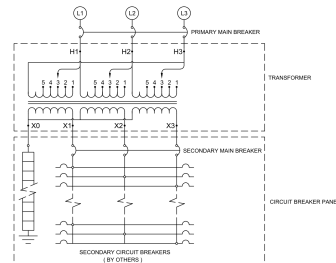
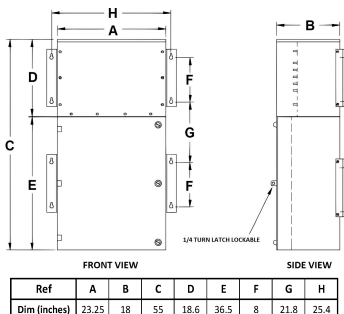
22.5KVA 600 VOLTS TO 208Y/120 VOLTS THREE PHASE PUSH-ON BREAKER MINI POWER CENTER

\$11,283.00 CAD

SKU: MP3A22J-M

Categories: [Mini Power Centers](#)

SCHEMATIC/DIAGRAM AND DIMENSION PICTURES





22.5KVA 600 VOLTS TO 208Y/120
VOLTS THREE PHASE PUSH-ON
BREAKER MINI POWER CENTER

PRODUCT SPECIFICATIONS

| | |
|-----------------------------|--|
| Weight | 630 lbs |
| Phases | 3 |
| kVA | 22.5 |
| Connection | MPC3P-5t |
| Primary Taps | +/- 2 x 2.5% |
| Conductor Material | Aluminum |
| BIL (Insulation) Level | 10kV |
| Impedance Range | 1.5 – 3.0% |
| Enclosure Type | NEMA 3R Outdoor |
| Enclosure Size | E3R-3PMPC-3 |
| Finish/Colour | Polyester Powder Coat – ANSI/ASA 61 Grey |
| Standards & Certifications | CSA Certified File No. LR34493, UL Listed File No. E495724, ISO 9001:2015 Registered |
| Incoming Voltage | 600 |
| Primary Breaker | 50A |
| Interrupting Rating | 14kAIC @ 600V |
| Output Voltage | 208Y/120 |
| Secondary Breaker | 70A |
| Short Circuit Withstand | 10kAIC @ 240V |
| Panel Board | Push-On |
| Load Center Bus Material | Aluminum |
| # of Circuits | 27 |
| Circuit Breaker Suitability | Eaton Type BR |
| Temperatue Rise | 130°C |
| Insuation Class | 200°C (Class N) |



OFFICIAL QUOTE

22.5KVA 600 VOLTS TO 208Y/120
VOLTS THREE PHASE PUSH-ON
BREAKER MINI POWER CENTER



| | |
|----------------------|----------------------------|
| Country/Manufacturer | Canada/RPM |
|----------------------|----------------------------|