



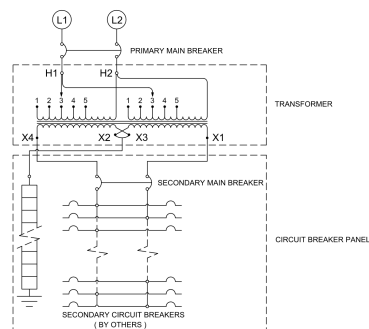
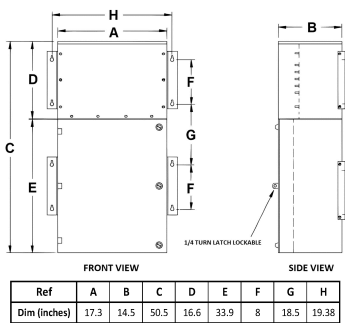
# 15KVA 600 VOLTS TO 120/240 VOLTS SINGLE PHASE PUSH-ON BREAKER MINI POWER CENTER

**\$7,522.20 CAD**

SKU: MP1A15J-K

Categories: [Mini Power Centers](#)

## SCHEMATIC/DIAGRAM AND DIMENSION PICTURES



15KVA 600 VOLTS TO 120/240 VOLTS  
SINGLE PHASE PUSH-ON BREAKER  
MINI POWER CENTER



## PRODUCT SPECIFICATIONS

Weight	375 lbs
Phases	<a href="#">1</a>
kVA	<a href="#">15</a>
Connection	<a href="#">MPC1P-5t</a>
Primary Taps	<a href="#">+/- 2 x 2.5%</a>
Conductor Material	<a href="#">Aluminum</a>
BIL (Insulation) Level	<a href="#">10kV</a>
Impedance Range	<a href="#">1.5 – 3.0%</a>
Enclosure Type	<a href="#">NEMA 3R Outdoor</a>
Enclosure Size	<a href="#">E3R-1PMPC-2</a>
Finish/Colour	<a href="#">Polyester Powder Coat – ANSI/ASA 61 Grey</a>
Standards & Certifications	<a href="#">CSA Certified File No. LR34493, UL Listed File No. E495724, ISO 9001:2015 Registered</a>
Incoming Voltage	<a href="#">600</a>
Primary Breaker	<a href="#">60A</a>
Interrupting Rating	<a href="#">14kAIC @ 600V</a>
Output Voltage	<a href="#">120/240</a>
Secondary Breaker	<a href="#">70A</a>
Short Circuit Withstand	<a href="#">10kAIC @ 240V</a>
Panel Board	<a href="#">Push-On</a>
Load Center Bus Material	<a href="#">Aluminum</a>
# of Circuits	<a href="#">20</a>
Circuit Breaker Suitability	<a href="#">Eaton Type BR</a>
Temperatue Rise	<a href="#">130°C</a>
Insuation Class	<a href="#">200°C (Class N)</a>



OFFICIAL QUOTE

15KVA 600 VOLTS TO 120/240 VOLTS  
SINGLE PHASE PUSH-ON BREAKER  
MINI POWER CENTER



Country/Manufacturer	<a href="#">Canada/RPM</a>
----------------------	----------------------------