

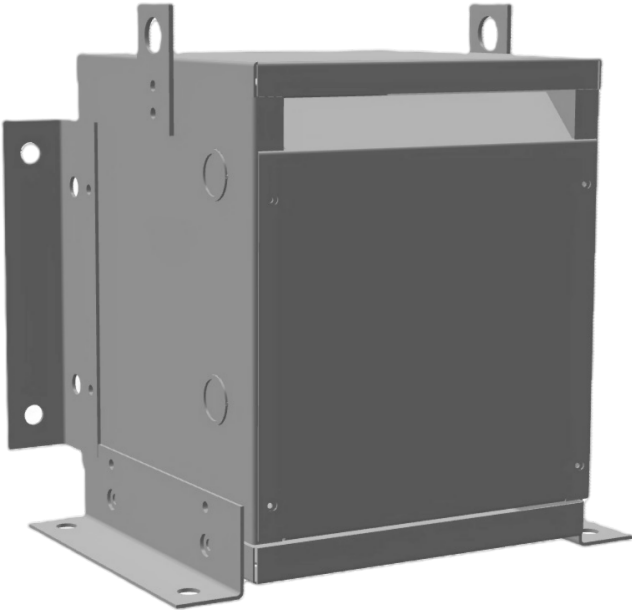


MC7H-C

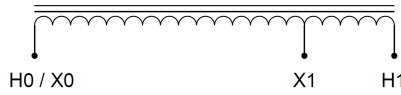
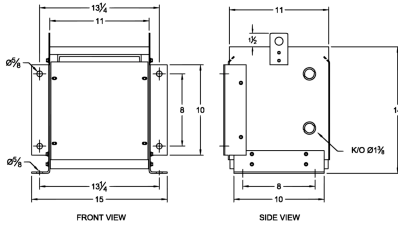
\$1,138.00 CAD

SKU: 5f1c5bf437aa

Categories: [Autotransformer](#)



SCHEMATIC/DIAGRAM AND DIMENSION PICTURES



PRODUCT SPECIFICATIONS

Weight	50 lbs
Phases	1
kVA	7.5
Connection	1PhA-NT-1
Primary Voltage	480
Primary Max Current	15.6A
Primary Markings	H0-H1



Primary Terminals	Terminal Blocks
Secondary Voltage	240
Secondary Max Current	31.3A
Secondary Markings	X0-X1
Secondary Terminals	Terminal Blocks
Primary Taps	N/A
Conductor Material	Copper
Insulation Class	220°C
BIL (Insulation) Level	10kV
Efficiency	N/A
Impedance	2.5 – 4.5%
Sound (db)	50
Enclosure Type	NEMA 1
Enclosure	E1-2
Finish	Polyster Powder Coat – ANSI/ASA 61 Grey
Standards & Certifications	CSA Certified File No. LR34493, UL Listed File No. E108255, ISO 9001:2015 Registered