



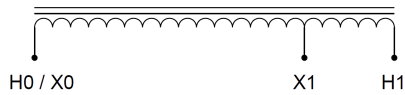
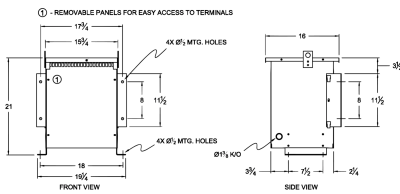
MC37H-C

\$2,448.00 CAD

SKU: b917bb7c19e5

Categories: [Autotransformer](#)

SCHEMATIC/DIAGRAM AND DIMENSION PICTURES



PRODUCT SPECIFICATIONS

Weight	165 lbs
Phases	1
kVA	37.5
Connection	1PhA-NT-1
Primary Voltage	480
Primary Max Current	78.1A
Primary Markings	H0-H1



Primary Terminals	#2-14 AWG
Secondary Voltage	240
Secondary Max Current	156.3A
Secondary Markings	X0-X1
Secondary Terminals	300MCM-6
Primary Taps	N/A
Conductor Material	Copper
Insulation Class	220°C
BIL (Insulation) Level	10kV
Efficiency	N/A
Impedance	2.5 – 4.5%
Sound (db)	50
Enclosure Type	NEMA 3R Indoor
Enclosure	E3R-4
Finish	Polyster Powder Coat – ANSI/ASA 61 Grey
Standards & Certifications	CSA Certified File No. LR34493, UL Listed File No. E108255, ISO 9001:2015 Registered