

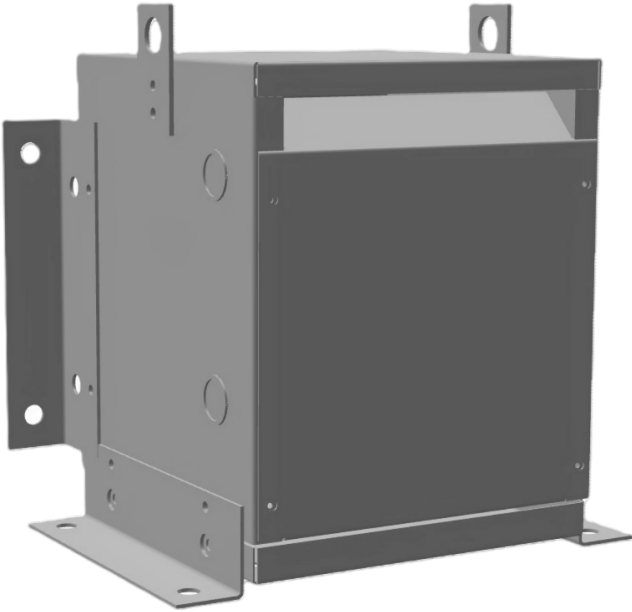


## MC10H-C

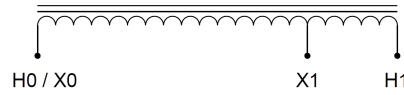
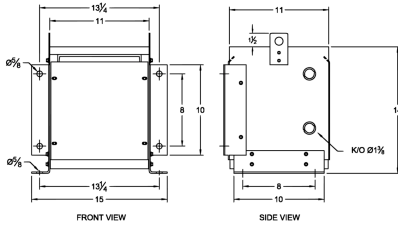
**\$1,411.00 CAD**

SKU: 15c6930f90f3

Categories: [Autotransformer](#)



### SCHEMATIC/DIAGRAM AND DIMENSION PICTURES



### PRODUCT SPECIFICATIONS

<b>Weight</b>	70 lbs
<b>Phases</b>	<a href="#">1</a>
<b>kVA</b>	<a href="#">10</a>
<b>Connection</b>	<a href="#">1PhA-NT-1</a>
<b>Primary Voltage</b>	<a href="#">480</a>
<b>Primary Max Current</b>	<a href="#">20.8A</a>
<b>Primary Markings</b>	<a href="#">H0-H1</a>



<b>Primary Terminals</b>	<a href="#">#2-14 AWG</a>
<b>Secondary Voltage</b>	<a href="#">240</a>
<b>Secondary Max Current</b>	<a href="#">41.7A</a>
<b>Secondary Markings</b>	<a href="#">X0-X1</a>
<b>Secondary Terminals</b>	<a href="#">#2-14 AWG</a>
<b>Primary Taps</b>	<a href="#">N/A</a>
<b>Conductor Material</b>	<a href="#">Copper</a>
<b>Insulation Class</b>	<a href="#">220°C</a>
<b>BIL (Insulation) Level</b>	<a href="#">10kV</a>
<b>Efficiency</b>	<a href="#">N/A</a>
<b>Impedance</b>	<a href="#">2.5 – 4.5%</a>
<b>Sound (db)</b>	<a href="#">50</a>
<b>Enclosure Type</b>	<a href="#">NEMA 1</a>
<b>Enclosure</b>	<a href="#">E1-2</a>
<b>Finish</b>	<a href="#">Polyster Powder Coat – ANSI/ASA 61 Grey</a>
<b>Standards &amp; Certifications</b>	<a href="#">CSA Certified File No. LR34493, UL Listed File No. E108255, ISO 9001:2015 Registered</a>