



37.5KVA 230 VOLTS TO 416 VOLTS SINGLE PHASE ISOLATION TRANSFORMER

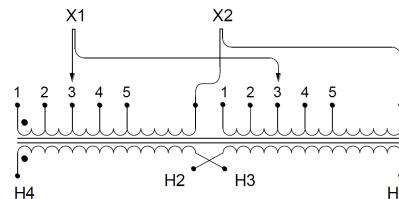
\$4,203.71 CAD

Single Phase Isolation Transformer with a capacity of 37.5kVA, transforming 230 Volts to 416 Volts

SKU: SC37C1-G/Z3

Categories: [Isolation Transformers](#)

SCHEMATIC/DIAGRAM AND DIMENSION PICTURES



Single Phase Isolation Transformer with a capacity of 37.5kVA, transforming 230 Volts to 416 Volts



PRODUCT SPECIFICATIONS

Weight	272 lbs
Phases	1
kVA	37.5
Connection	1Ph-2coil-5T-SU
Primary Voltage	230
Primary Max Current	163.04A
Primary Markings	X1-X2
Primary Terminals	300 MCM – 6
Secondary Voltage	416
Secondary Max Current	90.14A
Secondary Markings	H1-H2
Secondary Terminals	300 MCM – 6
Primary Taps	+/- 2 x 2.5%
Conductor Material	Copper
BIL (Insulation) Level	10kV
Efficiency (@35% Load) %	98.20% (DOE 2016/NRCan 2019)
Impedance Range	4.0 – 6.0%
Sound (db)	45
Enclosure Type	NEMA 3R Indoor
Enclosure Size	E3R-6
Finish/Colour	Polyester Powder Coat – ANSI/ASA 61 Grey
Standards & Certifications	CSA Certified File No. LR34493, UL Listed File No. E108255, ISO 9001:2015 Registered
Temperatue Rise	150°C



OFFICIAL QUOTE

37.5KVA 230 VOLTS TO 416 VOLTS
SINGLE PHASE ISOLATION
TRANSFORMER



Insuation Class	150°C
Country/Manufacturer	Canada/RPM
Finish/Colour	Polyester Powder Coat – ANSI/ASA 61 Grey