



## 30VA 120 VOLTS TO 460Y/266 VOLTS THREE PHASE ISOLATION TRANSFORMER

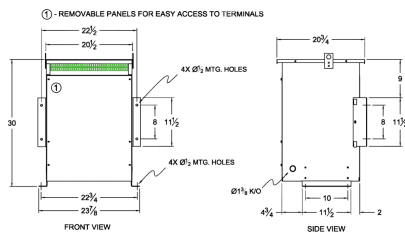
**\$4,445.28 CAD**

Three Phase Isolation Transformer with a capacity of 30kVA, transforming 120 Volts to 460Y/266 Volts

SKU: BA30A-P1/Z3

Categories: [Isolation Transformers](#)

### SCHEMATIC/DIAGRAM AND DIMENSION PICTURES



Three Phase Isolation Transformer with a capacity of 30kVA, transforming 120 Volts to 460Y/266 Volts



PRODUCT SPECIFICATIONS

|                            |  |
|----------------------------|--|
| Weight                     | 298 lbs  |
| Phases                     | <a href="#">3</a>  |
| kVA                        | <a href="#">30</a>   |
| Connection                 | <a href="#">3Ph-DY-5T-SU</a>   |
| Primary Voltage            | <a href="#">120</a>  |
| Primary Max Current        | <a href="#">144.34A</a>  |
| Primary Markings           | <a href="#">X1-X2-X3</a>   |
| Primary Terminals          | <a href="#">300 MCM – 6</a>  |
| Secondary Voltage          | <a href="#">460Y/266</a>   |
| Secondary Max Current      | <a href="#">37.65A</a>   |
| Secondary Markings         | <a href="#">H0-H1-H2-H3</a>  |
| Secondary Terminals        | <a href="#">300 MCM – 6</a>  |
| Primary Taps               | <a href="#">+/- 2 x 2.5%</a>   |
| Conductor Material         | <a href="#">Aluminum</a>   |
| BIL (Insulation) Level     | <a href="#">10kV</a>   |
| Efficiency (@35% Load) %   | <a href="#">98.23% (DOE 2016/NRCAN 2019)</a>   |
| Impedance Range            | <a href="#">4.0 – 6.0%</a>   |
| Sound (db)                 | <a href="#">45</a>   |
| Enclosure Type             | <a href="#">NEMA 3R Indoor</a>   |
| Enclosure Size             | <a href="#">E3R-6</a>  |
| Finish/Colour              | <a href="#">Polyester Powder Coat – ANSI/ASA 61 Grey</a>   |
| Standards & Certifications | <a href="#">CSA Certified File No. LR34493, UL Listed File No. E108255, ISO 9001:2015 Registered</a> |
| Temperature Rise           | <a href="#">150°C</a>  |



OFFICIAL QUOTE

30VA 120 VOLTS TO 460Y/266 VOLTS  
THREE PHASE ISOLATION  
TRANSFORMER



|                      |  |
|----------------------|--|
| Insuation Class      | <a href="#">150°C</a>                                    |
| Country/Manufacturer | <a href="#">Canada/RPM</a>                               |
| Finish/Colour        | <a href="#">Polyester Powder Coat – ANSI/ASA 61 Grey</a> |