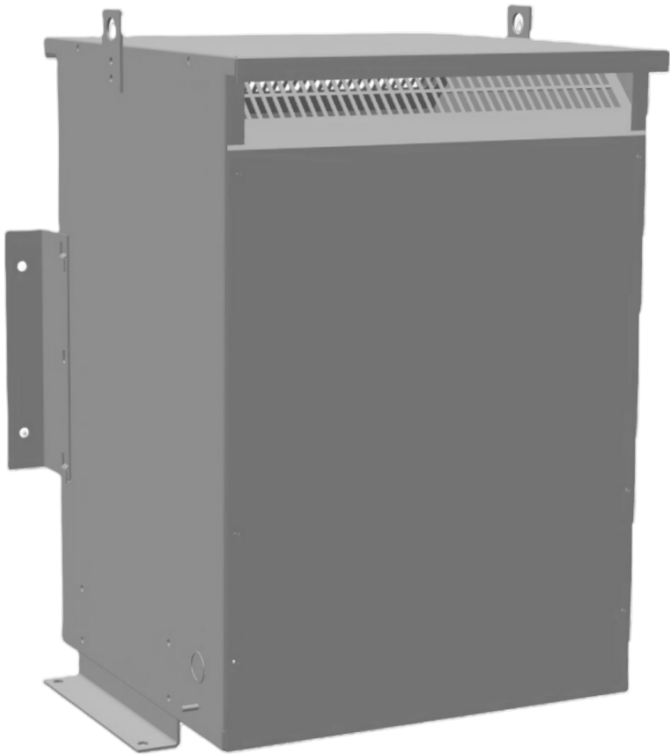




# OFFICIAL QUOTE

## 30KVA 380 VOLTS TO 415Y/240 VOLTS THREE PHASE ISOLATION TRANSFORMER



# 30KVA 380 VOLTS TO 415Y/240 VOLTS THREE PHASE ISOLATION TRANSFORMER

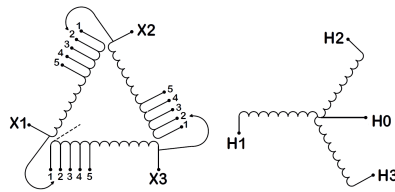
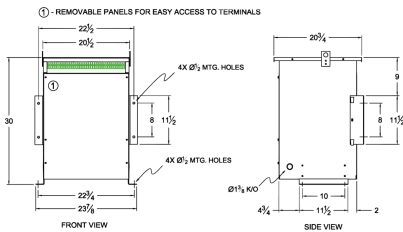
## \$4,519.37 CAD

Three Phase Isolation Transformer with a capacity of 30kVA, transforming 380 Volts to 415Y/240 Volts

**SKU:** BA30F-N2/Z3

**Categories:** [Isolation Transformers](#)

### SCHEMATIC/DIAGRAM AND DIMENSION PICTURES



Three Phase Isolation Transformer with a capacity of 30kVA, transforming 380 Volts to 415Y/240 Volts



## OFFICIAL QUOTE

### 30KVA 380 VOLTS TO 415Y/240 VOLTS THREE PHASE ISOLATION TRANSFORMER



#### PRODUCT SPECIFICATIONS

<b>Weight</b>	298 lbs
<b>Phases</b>	<a href="#">3</a>
<b>kVA</b>	<a href="#">30</a>
<b>Connection</b>	<a href="#">3Ph-DY-5T-SU</a>
<b>Primary Voltage</b>	<a href="#">380</a>
<b>Primary Max Current</b>	<a href="#">45.58A</a>
<b>Primary Markings</b>	<a href="#">X1-X2-X3</a>
<b>Primary Terminals</b>	<a href="#">#2-14 AWG</a>
<b>Secondary Voltage</b>	<a href="#">415Y/240</a>
<b>Secondary Max Current</b>	<a href="#">41.74A</a>
<b>Secondary Markings</b>	<a href="#">H0-H1-H2-H3</a>
<b>Secondary Terminals</b>	<a href="#">#2-14 AWG</a>
<b>Primary Taps</b>	<a href="#">+/- 2 x 2.5%</a>
<b>Conductor Material</b>	<a href="#">Aluminum</a>
<b>BIL (Insulation) Level</b>	<a href="#">10kV</a>
<b>Efficiency (@35% Load) %</b>	<a href="#">98.23% (DOE 2016/NRCan 2019)</a>
<b>Impedance Range</b>	<a href="#">4.0 – 6.0%</a>
<b>Sound (db)</b>	<a href="#">45</a>
<b>Enclosure Type</b>	<a href="#">NEMA 3R Indoor</a>
<b>Enclosure Size</b>	<a href="#">E3R-6</a>
<b>Finish/Colour</b>	<a href="#">Polyester Powder Coat – ANSI/ASA 61 Grey</a>
<b>Standards &amp; Certifications</b>	<a href="#">CSA Certified File No. LR34493, UL Listed File No. E108255, ISO 9001:2015 Registered</a>
<b>Temperatue Rise</b>	<a href="#">150°C</a>



OFFICIAL QUOTE

30KVA 380 VOLTS TO 415Y/240  
VOLTS THREE PHASE ISOLATION  
TRANSFORMER



Insuation Class	<a href="#">150°C</a>
Country/Manufacturer	<a href="#">Canada/RPM</a>
Finish/Colour	<a href="#">Polyester Powder Coat – ANSI/ASA 61 Grey</a>