



25VA 460 VOLTS TO 200 VOLTS SINGLE PHASE ISOLATION TRANSFORMER



25VA 460 VOLTS TO 200 VOLTS SINGLE PHASE ISOLATION TRANSFORMER

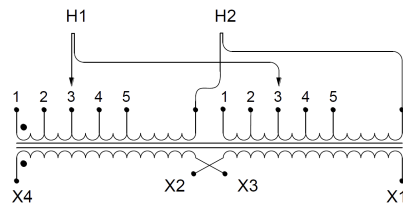
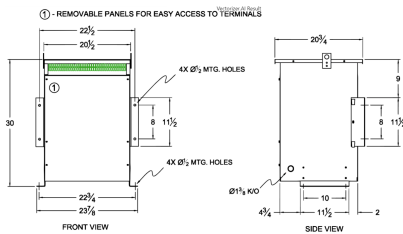
\$3,810.24 CAD

Single Phase Isolation Transformer with a capacity of 25kVA, transforming 460 Volts to 200 Volts

SKU: SC25H1-B1/Z3

Categories: [Isolation Transformers](#)

SCHEMATIC/DIAGRAM AND DIMENSION PICTURES



Single Phase Isolation Transformer with a capacity of 25kVA, transforming 460 Volts to 200 Volts



PRODUCT SPECIFICATIONS

Weight	225 lbs
Phases	1
kVA	25
Connection	1Ph-2coil-5t-SD
Primary Voltage	460
Primary Max Current	54.35A
Primary Markings	H1-H2
Primary Terminals	#2-14 AWG
Secondary Voltage	200
Secondary Max Current	125.0A
Secondary Markings	X1-X2
Secondary Terminals	#2-14 AWG
Primary Taps	+/- 2 x 2.5%
Conductor Material	Copper
BIL (Insulation) Level	10kV
Efficiency (@35% Load) %	98.00% (DOE 2016/NRCAN 2019)
Impedance Range	4.0 – 6.0%
Sound (db)	45
Enclosure Type	NEMA 3R Indoor
Enclosure Size	E3R-6
Finish/Colour	Polyester Powder Coat – ANSI/ASA 61 Grey
Standards & Certifications	CSA Certified File No. LR34493, UL Listed File No. E108255, ISO 9001:2015 Registered
Temperature Rise	150°C



OFFICIAL QUOTE
25VA 460 VOLTS TO 200 VOLTS
SINGLE PHASE ISOLATION
TRANSFORMER



Insuation Class	150°C
Country/Manufacturer	Canada/RPM
Finish/Colour	Polyester Powder Coat – ANSI/ASA 61 Grey