



15KVA 347 VOLTS TO 230/460 VOLTS SINGLE PHASE ISOLATION TRANSFORMER

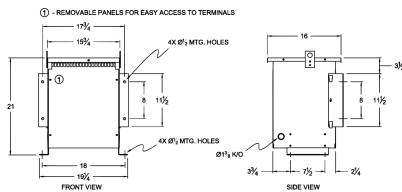
\$2,623.15 CAD

Single Phase Isolation Transformer with a capacity of 15kVA, transforming 347 Volts to 230/460 Volts

SKU: SC15E-L1/Z3

Categories: [Isolation Transformers](#)

SCHEMATIC/DIAGRAM AND DIMENSION PICTURES



Single Phase Isolation Transformer with a capacity of 15kVA, transforming 347 Volts to 230/460 Volts

15KVA 347 VOLTS TO 230/460 VOLTS
SINGLE PHASE ISOLATION
TRANSFORMER



PRODUCT SPECIFICATIONS

Weight	215 lbs
Phases	1
kVA	15
Connection	1Ph-2coil-5t-SD
Primary Voltage	347
Primary Max Current	43.23A
Primary Markings	H1-H2
Primary Terminals	#2-14 AWG
Secondary Voltage	230/460
Secondary Max Current	65.22A
Secondary Markings	X1-X2
Secondary Terminals	#2-14 AWG
Primary Taps	+/- 2 x 2.5%
Conductor Material	Copper
BIL (Insulation) Level	10kV
Efficiency (@35% Load) %	97.70% (DOE 2016/NRCAN 2019)
Impedance Range	4.0 – 6.0%
Sound (db)	45
Enclosure Type	NEMA 3R Indoor
Enclosure Size	E3R-4
Finish/Colour	Polyester Powder Coat – ANSI/ASA 61 Grey
Standards & Certifications	CSA Certified File No. LR34493, UL Listed File No. E108255, ISO 9001:2015 Registered
Temperature Rise	150°C



OFFICIAL QUOTE

15KVA 347 VOLTS TO 230/460 VOLTS
SINGLE PHASE ISOLATION
TRANSFORMER



Insuation Class	150°C
Country/Manufacturer	Canada/RPM
Finish/Colour	Polyester Powder Coat – ANSI/ASA 61 Grey