



15KVA 208 VOLTS TO 415 VOLTS SINGLE PHASE ISOLATION TRANSFORMER

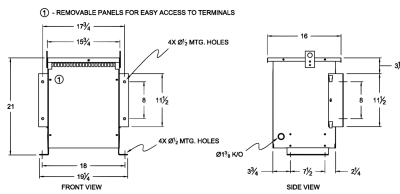
\$2,513.85 CAD

Single Phase Isolation Transformer with a capacity of 15kVA, transforming 208 Volts to 415 Volts

SKU: SC15B-G2/Z3

Categories: [Isolation Transformers](#)

SCHEMATIC/DIAGRAM AND DIMENSION PICTURES



Single Phase Isolation Transformer with a capacity of 15kVA, transforming 208 Volts to 415 Volts



PRODUCT SPECIFICATIONS

Weight	215 lbs
Phases	1
kVA	15
Connection	1Ph-2coil-5T-SU
Primary Voltage	208
Primary Max Current	72.12A
Primary Markings	X1-X2
Primary Terminals	Pads
Secondary Voltage	415
Secondary Max Current	36.14A
Secondary Markings	H1-H2
Secondary Terminals	Pads
Primary Taps	+/- 2 x 2.5%
Conductor Material	Copper
BIL (Insulation) Level	10kV
Efficiency (@35% Load) %	97.70% (DOE 2016/NRCAN 2019)
Impedance Range	4.0 – 6.0%
Sound (db)	45
Enclosure Type	NEMA 3R Indoor
Enclosure Size	E3R-4
Finish/Colour	Polyester Powder Coat – ANSI/ASA 61 Grey
Standards & Certifications	CSA Certified File No. LR34493, UL Listed File No. E108255, ISO 9001:2015 Registered
Temperature Rise	150°C



OFFICIAL QUOTE

15KVA 208 VOLTS TO 415 VOLTS
SINGLE PHASE ISOLATION
TRANSFORMER



Insuation Class	150°C
Country/Manufacturer	Canada/RPM
Finish/Colour	Polyester Powder Coat – ANSI/ASA 61 Grey